

SRHE Annual Report

2014



SRHE

Society for Research into Higher Education

Advancing knowledge Informing policy Enhancing practice

73 Collier Street
London N1 9BE
United Kingdom

T +44 (0)20 7427 2350
F +44 (0)20 7278 1135
E srheoffice@srhe.ac.uk

www.srhe.ac.uk

Director: Helen Perkins
Registered Charity No. 313850
Company No. 00868820
Limited by Guarantee
Registered office as above

CONTENTS

2	ADMINISTRATIVE DETAILS
2	TRUSTEES (GOVERNING COUNCIL OFFICERS) AT 23RD OCTOBER 2014
2	DIRECTOR AND COMPANY SECRETARY
2	EXECUTIVE
3	FELLOWS
6	CHAIR'S INTRODUCTION
8	A WORD FROM THE SOCIETY'S DIRECTOR
10	MEMBERSHIP UPDATE
12	STANDING COMMITTEES (AS AT 23RD OCTOBER 2014)
13	SRHE CONFERENCE 2014
14	SRHE RESEARCH AWARDS 2014
15	2014 NEWER RESEARCHER PRIZE WINNERS
16	SRHE PUBLICATIONS
18	SRHE NETWORK EVENTS 2014
19	PROFESSIONAL DEVELOPMENT WORKSHOPS 2014
20	HONORARY TREASURER'S REPORT
21	STATEMENT OF FINANCIAL ACTIVITIES
22	BALANCE SHEET AT 31 JULY 2014

Administrative Details

This is the 2014 Annual Report for the Society for Research into Higher Education (SRHE).

The Society is a charity registered with the UK Charity Commission – reference number 313850.

The Society is also a Limited Company, registration number 868820. The registered office for the Society into Research into Higher Education is: 73 Collier Street, London N1 9BE This is also the principal and sole office of the Society.

Trustees (Governing Council Officers) at 31st October 2014

Chair: Professor Jill Jameson, University of Greenwich

Honorary Treasurer: Mr David Palfreyman, New College, University of Oxford

Governing Council Members (at 1st November 2014):

Professor Paul Ashwin Lancaster University

Professor Paul Blackmore King's College, London

Professor Penny-Jane Burke University of Roehampton

Dr Helen Carasso University of Oxford

Professor Sue Clegg Leeds Beckett University

Dr Kelly Coate King's College, London

Professor Linda Evans University of Leeds

Professor George Gordon University of Strathclyde

Dr Lesley Gourlay UCL Institute of Education

Dr David Hay King's College, London

Professor Ian Kinchin University of Surrey

Professor Sue Law University of Leicester

Mr William Locke UCL Institute of Education

Professor Chris Pole University of Brighton

Dr Karen Smith University of Greenwich

Professor Jacqueline Stevenson Sheffield Hallam University

Professor Denise Whitelock Open University

Director and Company Secretary

Helen Perkins

Executive

Franco Carta, Finance Officer

Rob Gresham, Manager: Operations & Finance

Nicola Manches, Administration Officer

Francois Smit, Consultant Conference and Events Organiser

President

Professor Sir Robert Burgess, Vice-Chancellor, University of Leicester

Vice-Presidents

Professor Roger Brown Dr Elaine El-Khawas

Dr Mary-Louise Kearney Professor Sir Peter Scott

Baroness Sharp of Guildford Professor Sir William Taylor

Professor Ulrich Teichler

FELLOWS

Fellows

<i>Name</i>	<i>Affiliation</i>	<i>Appointed</i>
Professor Marcia Devlin	Federation University Australia	January 2014
Professor Christine Musselin	Institut d'Etudes Politiques de Paris	January 2014
Professor Sir David Watson	Green Templeton College, University of Oxford	January 2014
Professor Lee Harvey	Copenhagen Business School	January 2013
Professor Bruce Macfarlane	University of Southampton	January 2013
Professor Monica McLean	University of Nottingham	January 2013
Professor Patrick Ainley	University of Greenwich	January 2012
Professor Carole Leathwood	London Metropolitan University	January 2012
Professor Jeroen Huisman	University of Ghent	January 2012
Professor Lynn McAlpine	University of Oxford/ McGill	January 2012
Professor Rob Cuthbert	University of West of England	January 2011
Professor Claire Callender	University of London, Birkbeck & UCL Institute of Education	January 2011
Professor Paul Trowler	University of Lancaster	January 2011
Professor Ian McNay	University of Greenwich	January 2011
Professor Rosemary Deem	Royal Holloway, University of London	January 2010
Professor Kerri-Lee Krause	Griffith University Australia	January 2010
Professor Robin Middlehurst	University of Kingston, UK	January 2010
Professor John Richardson	Open University	January 2010
Professor Ulrich Teichler	University Kassel	January 2009
Professor Angela Brew	University of Sydney	January 2008
Professor Gunnar Handal	University of Oslo	January 2008
Professor Dai Hounsell	University of Edinburgh	January 2008
Professor Louise Morley	University of Sussex	January 2008
Professor Michael Shattock	UCL Institute of Education	January 2008
Professor Mantz Yorke	Liverpool John Moores University	January 2008
Professor John Brennan	Open University	January 2006
Professor Oliver Fulton	University of Lancaster	January 2006
Professor Malcolm Tight	University of Lancaster	January 2006
Professor Ted Tapper	University of Sussex	January 2006
Professor Simon Marginson	University of Sydney, Australia	January 2004
Professor Gareth Parry	University of Sheffield	January 2004
Mr John Skelton	Open University Press	January 2004
Professor Gareth Williams	Institute of Education University of London	January 2003
Professor Noel Entwistle	University of Edinburgh	January 2002
Professor David Dill	University of North Carolina	January 2001

Professor James Ratcliffe	Pennsylvania State University	January 2001
Ms Harriet Croft	University of the West of England	January 2000
Dr Peter Maassen	University of Oslo, Norway	January 2000
Professor Ronald Barnett	UCL Institute of Education	January 1998
Professor Mary Henkel	Brunel University	January 1998
Dr John Wyatt	University of Chichester	January 1998
Dr Marianne Bauer	University of Gothenburg	January 1997
Professor Ingrid Moses	University of New England	January 1996
Professor Sheldon Rothblatt	University of California	January 1996
Professor Sinclair Goodlad	Imperial College London	January 1993
Professor Ference Marton	University of Gothenburg	January 1992
Professor David Boud	University of Technology Sydney	January 1991
Professor Lewis Elton	University College London	January 1991
Professor John Pratt	University of East London	January 1991
Professor Sir Peter Scott	UCL Institute of Education, London	January 1991
Professor Alan Smithers	University of Buckingham	January 1991

Honorary Fellows:

Professor Michael Peters	University of Waikato, New Zealand	2010
Professor Jurgen Enders	University of Bath	2011

Lifetime Achievement Award:

Ms Renate Simpson	Historian / University of Essex	2010
-------------------	---------------------------------	------

Financial year August 2013 – July 2014
Reporting year January 2014 – December 2014



It has been both a pleasure and a privilege for me to serve again as Chair of the Society during 2013-14, in a dynamic, uncertain, yet also exhilaratingly productive period for research into higher education, not only for the Society and its members, but for institutions across the UK and more widely throughout higher education in an international context.

During the past year, we have experienced together a number of other important changes, both within the Society and across the higher education sector. The incoming President of SRHE in 2013-14, Professor Sir Robert Burgess, former Vice-Chancellor of the University of Leicester, has worked with us to shape the Society's ongoing mission and strategic development, addressing delegates in an informative, challenging Presidential Keynote at the Society's Annual Conference in December, 2014 at Celtic Manor. Bob reminded us of the significance of university leadership of research as an investigative tool that can proactively enable beneficial development in higher education. Also at the Annual General Meeting at the conference, we extended our grateful thanks to Rebecca Bunting of Portsmouth University for her many years of dedicated work as outgoing Vice-Chair, which has been much valued in guiding us through many new developments.

I am very pleased to report that again, during 2013-14, the Society achieved excellent progress across all strategic priority areas identified by Governing Council, with outstanding feedback from a significant percentage of delegates once more at our two annual conferences. The Society again this year has in place robust finances with an agreed strategy for expenditure, a growing portfolio of well-respected research awards, a buoyant series of well-subscribed academic research development lectures and research network

events, and continuing growth in membership.

A series of online innovations in the Society's website and marketing tools introduced in 2013-14 has been successful, gradually accumulating in impact: the Society's blog has enabled both established and newer researchers to contribute thoughtful articles commenting on numerous areas of interest relating to research into higher education. Commentary on theoretical, policy-related, academic and social developments within the Society has been interwoven with entertaining articles from some academics, enlivening the collegial debate on the nexus between policy, research and academic practice in higher education. The Society's newsletters have again provided members with fascinating reading in a series of informative, provocative and thoughtful pieces this year and we thank in particular Professor Rob Cuthbert for his witty and thoughtful contributions.

Numbers of international delegates at our two conferences have continued the strong tradition within the Society to support scholarly engagement in higher education research across the world: during our forthcoming 50th Anniversary celebrations, international academics will make an important contribution. Our commitment to ensure that both UK and international researchers continue to have the opportunity to disseminate their research through the Society's publications, conferences, research awards and network events, is, as ever, of key importance. I remain deeply committed to the Society's efforts to ensure that such opportunities continue to be provided in the furtherance of our charitable status and mission: echoing my statements of earlier years, I reiterate that innovative and experimental research into higher education must be allowed to flourish in SRHE for the benefit of all.

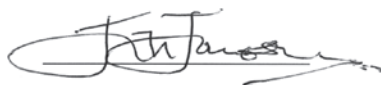
In summary, therefore, I am pleased to report that the Society has grown from strength to strength in 2013-14, providing anew the freedom and stimulation that are enabled by the scholarly, collaborative, cross-institutional spaces that are so vital in the development of research within higher education. We will continue to develop evidence of the impact of the many academic research and scholarly contributions that the Society makes to ensure these are recognised both by the public and by policy-makers. In delivering our 50th anniversary celebrations in 2015, we renew our commitment to develop the mission and values to which we dedicate ourselves as a learned society.

I am sure that all members of the Society will join me in thanking the Society's Director, Helen Perkins and the SRHE team, Rob Gresham, Francois Smit, Franco Carta and Nicola Manches for their continuing enthusiastic dedication and diligent efforts in the provision of the Society's many strategic and operational functions.

In particular I would like to thank Helen Perkins for her excellent leadership of the SRHE team and for the many contributions she has made to the Society which have been of so much benefit to all members. I would also like to thank all my colleagues, including notably Professor George Gordon for his wise, generous steerage as Chair of the Governance and Appointments Committee, Mr David Palfreyman, our Treasurer, for skilful, rigorous management of the Society's financial investments, Professor Sue Clegg for her outstanding Conference Keynote speech and her academic vision and dedication as Chair of the Publications Committee.

Finally, I acknowledge with grateful thanks all members of Governing Council and the Society's committees as well as the Society's Network Convenors and our many other contributing members for their commitment, loyalty and hard work for the Society over the past year.

In planning for this 50th Anniversary celebratory year, I look forward to working again with my fellow trustees, the SRHE team, and all members and friends of the Society to help ensure that the Society remains highly influential, relevant and innovative. We aim to continue to provide members with the numerous services that make a positive difference to academic research and professional development. We look forward to sharing together both fond memories and many new initiatives in this 50th Anniversary year, in taking forward the future of the Society. Our commitment to the UK-wide and international development of higher education research, academic scholarship and quality in research into higher education remains as strong as ever.



PROFESSOR JILL JAMESON, *Chair*



Financial year August 2013 – July 2014
Reporting year January 2014 – December 2014

This has been an intriguing year for the Society, one in which we have made great strides in bringing to fruition a number of plans for our future development whilst at the same time involving a fair amount of looking back into our past history as we prepare for our 50th Anniversary year in 2015.

To begin with our forward focus, one of the most significant achievements this year has been in securing a new five year Publications Agreement for the period 2015-2019. This brings us a degree of financial stability on which we can base and plan our longer term goals. Preparing for a new publications agreement is an involved and fairly complex process, considering and exploring a range of options and assessing risk and opportunity. With publishing and disseminating research at the core of our activities, planning the long term future for our journals is a critical business decision.

After a very thorough consideration of all possible options we are very pleased to have concluded an agreement for the next five years with Taylor and Francis. The Society has had a long association with Taylor and Francis and it has been a highly productive and effective partnership, and one which continues to provide the Society with the very best set of options. Not least among these, and a crucial element of this new agreement, is the capacity it brings to launch a new journal, Policy Reviews in Higher Education, to sit alongside Studies in Higher Education and Research into Higher Education Abstracts and also complement Higher Education Quarterly, published in association with Wiley.

It has been a long held ambition for the Society to open up a space for the publication of extended, long form articles, more discursive and comparative in style and content than

those submitted and published in the majority of subject specific academic journals. The format of this new journal will facilitate a more in-depth and considered examination of key policy issues, their genesis, impact and ramifications. The scope of all contributions will be international and the aim for the journal is to open up a platform for a dynamic analysis of policy issues across the broadest spectrum of higher education policy issues globally, as well as stimulate wide engagement both across and within disciplines. This is a very exciting and ambitious undertaking which will support our international and multidisciplinary focus. The first edition of our new journal is planned to publish in time for SRHE Conference 2016.

The Society now has a very firmly embedded set of core activities: a suite of companion journals; a flourishing new book series now entering its 4th year in publication and offering an impressive 12 titles already; a very vibrant series of Research Networks running seminars on an almost weekly basis; a Professional Development Programme for new and emerging researchers; a range of Research Awards and of course our two International Annual Conferences. So the future's so bright, (a reference for anyone who can remember the original Timbuk 3 track before a particular mobile network misappropriated the tag line).

Which brings us to the looking back part of this year. In many ways SRHE today is a totally different organisation to the one formed as a "Company limited by guarantee with no share capital" on 31 December 1965 by thirteen men and two women, under the chairmanship of Nicolas Malleon and with one part-time secretary.

On closer examination of the records and archives these early pioneers- and their successors as Chair over the next two decades

especially - made a considerable impact nationally, particularly in terms of informing policy. The Leverhulme funded report “Excellence in Diversity: Towards a New Strategy for Higher Education” published by the Society in the early 1980s and based on nine programmes of study organised by the Society is a particular example of the level of impact the Society was able to achieve with little infrastructure and a huge amount of effort and input from some very committed and dedicated individuals.

During 2015 we will be marking the Society’s 50th Anniversary year in a number of ways, with a Colloquium on Valuing Research into Higher Education followed by a celebratory

reception at the House of Lords on 26 June 2015 and of course the Annual Conference in December 2015. There will also be a number of publications during the course of the year marking the Anniversary, taking the opportunity to look back at some of the most influential articles featured in *Studies in Higher Education* since it first published in 1976 as one example, and then looking forward at the current state of research into higher education in a new SRHE book entitled *Researching Higher Education: International perspectives on theory, policy and practice* to be published in December 2015.



HELEN PERKINS, *Director*



Membership benefits

- Substantial discounts on rates for SRHE Annual Conference
- Free attendance at any SRHE Seminars and SRHE supported events
- Free subscription to Research into Higher Education Abstracts, including on-line access to the current issue and the full on-line archive of Abstracts
- On-line access to Higher Education (HE) journals such as Teaching in HE, Assessment & Evaluation in HE, European Journal of HE, Innovations in Education and Teaching International, Journal of Marketing for HE, Perspectives: Policy and Practice in HE, and Quality in HE
- Reduced rates for Studies in Higher Education (over 50% reduction on subscription rates) and free on-line access to the journal archive
- Free copies of SRHE News, providing an international review of all that is current in research into HE
- 30% discount on all books published by Routledge/Taylor and Francis
- 20% discount on all books and journals published by Wiley Publishing
- The opportunity to apply for the annual research grants
- The opportunity to participate in the Society's Networks
- Access to - and inclusion in- the Register of Members' Research Interests - to help facilitate networking between the Society's members
- Reduced rates for Higher Education Quarterly

Membership rates for 2014-15

<i>Standard Membership</i>	<i>£100.00</i>
<i>Retired (annual subscription)</i>	<i>£45.00</i>
<i>Retired (lifetime membership)</i>	<i>£300.00</i>
<i>Student</i>	<i>£35.00</i>
<i>Studies in Higher Education (Member rate personal subscription)</i>	<i>£60.00</i>
<i>Higher Education Quarterly (Member rate personal subscription)</i>	<i>£35.00</i>

Current Membership Numbers (in comparison with this time last year)

<i>Member Group</i>	<i>At 17th October 2014</i>	<i>At 25th October 2013</i>	<i>% Change</i>
<i>Individual</i>	<i>505</i>	<i>418</i>	<i>+21%</i>
<i>Retired</i>	<i>71</i>	<i>60</i>	<i>+18%</i>
<i>Student</i>	<i>197</i>	<i>200</i>	<i>-1%</i>
<i>TOTAL</i>	<i>774</i>	<i>678</i>	<i>+14%</i>
<i>Guest members</i>	<i>1,924</i>	<i>1,240</i>	<i>+55%</i>
<i>All member types</i>	<i>2,698</i>	<i>1,918</i>	<i>+41%</i>

Membership Numbers

As the above table indicates, membership numbers have grown encouragingly over the past year. The increase individual membership is due in part to the '2 years for the price of 1' promotion offered in February-March 2014, which resulted in 40 new individual member sign ups.

Membership Income

Subscriptions payments exceeded the annual budgeted target of £47,000 with just under £56,000 received between 1st August 2013 and 31st July 2014 – an increase of around £6k on the previous year. Once year- end adjustments were made by the auditors (note this is required as all membership payments are made in advance) the figure rises slightly to £60k, compared with £49k the previous year.

Membership types and categories

The table below shows the membership mix across the 3 categories over the past 3 years, which is relatively stable.

<i>Membership type</i>	<i>Individual</i>	<i>Student</i>	<i>Retired</i>
2012	68%	24%	8%
2013	57%	33%	10%
2014	64%	27%	9%

International Membership

In terms of the UK/ International split, the proportion of UK-based members stands at 81%, compared with 75% in 2013. Attracting further international members remains a priority, and further consideration will be given to the international membership offering over the next few years, as there are key concentrations of SRHE members in countries such as Australia, Ireland, Canada, USA, Netherlands, and Germany, as well as smaller numbers of members spread across a wide range of countries.



ROB GRESHAM,
Manager: Operations & Finance

STANDING COMMITTEES (AS AT 2 OCTOBER 2014)

Management and Finance Committee

Chair: Professor Jill Jameson, University of Greenwich

Committee members:

Ms Rebecca Bunting, Co-opted Member
 Professor Sue Clegg, Chair- Publications Committee
 Professor George Gordon, Chair-Governance & Appointments Committee
 Professor Sue Law, Chair – Research & Development Committee
 Mr David Palfreyman, Honorary Treasurer

Governance and Appointments Committee

Chair: Professor George Gordon, University of Strathclyde

Committee members:

Professor John Brennan, Open University
 Ms Rebecca Bunting, University of Portsmouth
 Dr Helen Carasso, University of Oxford
 Mr William Locke, UCL Institute of Education
 Professor Sue Law, University of Leicester

Publications Committee

Chair: Professor Sue Clegg, Leeds Beckett University

Committee members:

Professor Penny Jane Burke, University of Roehampton
 Dr Kelly Coate, King's College, London
 Professor Rob Cuthbert, Editor, SRHE News (University of the West of England)
 Dr David Hay, King's College, London
 Professor Jeroen Huisman, Series Editor SRHE Book Series-(University of Ghent, Belgium)
 Dr Lisa Lucas, University of Bristol
 Professor Ian McNay, University of Greenwich
 Mr David Palfreyman, SRHE Hon Treasurer (University of Oxford)
 Professor John Richardson, Associate Editor, Studies in Higher Education (Open University)
 Dr Roeland van der Rijst, Associate Editor: Research into HE Abstracts (University of Leiden)
 Dr Karen Smith, University of Greenwich
 Dr Gerda Visser-Vijnveen, Editor: Research into HE Abstracts (University of Leiden)
 Dr Celia Whitchurch, Editor: HE Quarterly (UCL Institute of Education)

Research and Development Committee

Chair: Professor Jill Jameson, University of Greenwich

Committee members:

Professor Paul Ashwin, Lancaster University
 Mr Patrick Baughan, City University
 Professor Paul Blackmore, King's College London
 Professor Claire Callender, Birkbeck / UCL Institute of Education
 Dr Lesley Gourlay, UCL Institute of Education
 Professor Ian Kinchin, University of Surrey
 Professor Monica McLean, University of Nottingham
 Dr Georgy Petrov, University of Kingston
 Professor Chris Pole, University of Brighton
 Professor Jacqueline Stevenson, Leeds Beckett University
 Dr Saranne Weller, King's College, London

Inspiring future generations: embracing plurality and difference in higher education

Annual Research Conference

10-12 December 2014, Celtic Manor, Newport.

The 2014 SRHE Annual Research Conference brought together 357 delegates from 25 countries to consider the key current issues in Higher Education research. 250 papers were presented, along with 10 symposia and a series of *Research Direction* seminars.

Keynote speakers were as follows:

Professor Sue Clegg

Emeritus Professor of Higher Education Research at Leeds Beckett University on *System diversity, inequality, curriculum and (possibly) hope*

Professor Jürgen Enders

Professor of Higher Education at the Southampton Education School on *In praise of diversity: a socio-political perspective on field dynamics in higher education* plus a Presidential Address from **Professor Sir Robert Burgess**.

The programme also included the Society's Annual General Meeting on Wednesday 10th December, and for the first time a Conference 'App', saw many delegates navigating the conference via their smartphones and tablets rather than using paper.

The Society's Research Awards were also presented at the Conference Gala Dinner on Thursday 11th December, and we are grateful to all delegates, exhibitors and sponsors for making the 2014 Research Conference such a welcoming and vibrant event.

Newer Researchers Conference

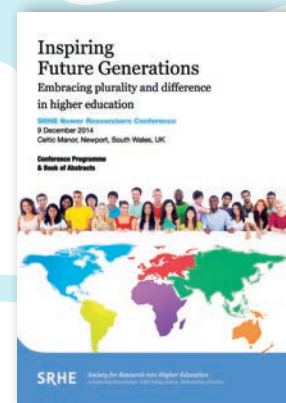
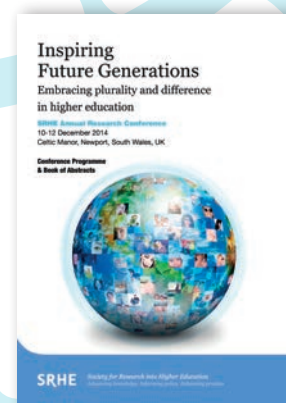
9 December 2014, Celtic Manor, Newport.

This conference featured a keynote address from **Professor Jeroen Huisman** from Centre for Higher Education Governance, Ghent, Belgium, entitled *Higher Education Institutions as (Changing) Organisations*

With around 90 delegates from 13 different countries, this conference provided a valuable opportunity for newer researchers to share and discuss their work with peers in the Higher Education research community in a supportive and developmental environment.

The research poster competition drew in 32 excellent posters and sparked many interesting discussions, providing an additional focus for networking between all delegates. Congratulations go to our two competition winners, David Morning from Northumbria University in the UK, and Jean Farmer from Stellenbosch University in South Africa. These two winning posters are now proudly on display in the SRHE offices also.

Our thanks go to the organising committee of Dr Mark Kerrigan, Dr Sian Lindsay, and Dr Harriet Dismore who were once again key to the success of this event.



RESEARCH AWARDS 2014

After peer review and selection panel discussion and agreement, the Society made the following awards:

- Three Member-only awards of £10,000 each for research focused on any aspect of higher education
- Four Scoping awards of £5,000 each for the exploration of any new or emerging area of higher education research leading to the development of a plan for further research. Scoping awards were open to all and applications were received from members and non-members of the Society.

The Society is pleased to record the awards made in 2014 were as follows:



*Jim Pugh on behalf
of Katy Vigurs*



Richard Watermeyer



*Janice Malcolm on behalf
of Joanna Williams*

All awards presented by the Society Chair, Professor Jill Jameson

Research Awards 2014: 3 awards of £10,000 each

Dr Katy Vigurs, Staffordshire University, Greater Expectations of Post-Graduation Futures? A Comparative Analysis of the Views of the Last Generation of Lower-Fees Undergraduates with the First Generation of Higher-Fees Undergraduates at Two English Universities

Dr Richard Watermeyer, University of Surrey, Towards a cartography of impact: Analysing the process of 'impact' peer-review in the REF

Dr Joanna Williams, University of Kent, Academic Integrity: Exploring Tensions between Perception and Practice in the Contemporary University

Scoping Awards 2014: 4 awards of £5,000 each

Dr Alex Baratta, University of Manchester, Academic identity and religious identity: cognitive dissonance in students' higher education learning and assessment

Dr Cate Gribble, Deakin University, Australia, Exploring 'employability' in different cultural contexts

Dr Madeleine Laming, Murdoch University, Australia, Mature-aged men's experiences of higher education: Australia and England compared

Dr Alicia Prowse, Manchester Metropolitan University, Potential of the Human Capabilities Approach (HCA) for strategy development in the Higher Education curriculum

Further information on the Society's Awards is available from www.srhe.ac.uk under the 'Research' section.



DR YE LIU from Bath Spa University was awarded the 2014 Prize for her proposal entitled:

“When Choices Become Chances: Extending Boudon’s Secondary Effects Theory to Analyze Social Reproduction Through University Choices in Contemporary China”

Ye joined Bath Spa University as a lecturer in International Education in 2013. Prior to her post at Bath Spa, she was a lecturer of Contemporary Chinese Studies and Director of the BA programme in Chinese Studies at the University College Cork, Ireland from 2012 to 2013.

Ye was awarded a PhD in Comparative Sociology in 2011 at the UCL Institute of Education, supported by a Nicholas Hans Scholarship and the Overseas Research Student (ORS) scholarship. Her thesis investigated the socio-economic patterns of access to educational opportunities and the impact of education policy on the life chances of different social groups during China’s transition to a market economy.

Over the past ten years Ye has conducted survey studies, extensive interviews and in-depth observations in East China, covering education topics relating, for instance, to higher education selection and gender participation in education. Her research has also covered other social policy issues relating to population control (the ‘One-Child’ policy), residence and rural-urban mobility (the Hukou), the New Rural Healthcare reform and geographical inequality.

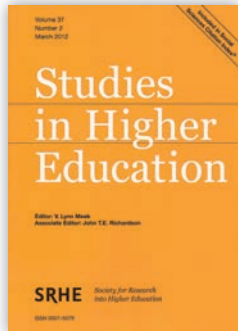
Ye has published in highly ranked international journals such as British Journal of Sociology of Education. She is also contracted by Springer to publish a monograph entitled: “Education, Meritocracy and Social Harmony in Contemporary China”.

PHILIPPA SHEAIL from the University of Edinburgh has been awarded the 2014 Prize for her proposal entitled:

“Global gatherings and digital divides: internationalisation and the digital in higher education”

Phil is currently completing her PhD with the School of Education at the University of Edinburgh. She was awarded a Principal’s Career Development Scholarship by the University to undertake her PhD research, which takes a narrative ethnographic approach to considering organisational change in relation to the expansion of online distance education in the higher education sector. Her research interests are interdisciplinary, based in the area of digital and higher education, but drawing on organisational theory, cultural geography, social theories of time, and temporal design in education.

Phil has an MA in English and Scottish literature from the University of Edinburgh and a Diploma in Computing from the Open University. She worked in university administration for twelve years, latterly as manager of the Scottish Digital Library Consortium (SDLC). Whilst working, Phil completing an MSc in E-Learning, also with the University of Edinburgh, which led to her current PhD research. She is a member of the DiCE (digital cultures and education) research group at Edinburgh, and is also tutor on the MSc in Digital Education.



Studies in Higher Education

This journal has a wide ranging interest in higher education and the social and institutional contexts within which it takes place, but gives particular emphasis to education as practice, with a view to influencing its development.

Published by: Routledge Taylor & Francis Group
Frequency: Eight issues per year plus two special issues in 2013 and 2014
Print ISSN: 0307-5079
Online ISSN: 1470-174X

Editor: Professor V. Lynn Meek, University of Melbourne, Australia
Special Issues Editors: Dr Mary-Louise Kearney, OECD, France & Dr Dan Lincoln, Boston College, USA
Associate Editor: Professor John Richardson, Open University, UK.



Higher Education Quarterly

Higher Education Quarterly publishes articles concerned with policy, strategic management and ideas in higher education. A substantial part of its contents is concerned with reporting research findings in ways that bring out their relevance to senior managers and policy makers at institutional and national levels, and to academics who are not necessarily specialists in the academic study of higher education.

Higher Education Quarterly also publishes papers that are not based on empirical research but give thoughtful academic analyses of significant policy, management or academic issues.

Published by: Wiley Blackwell Publishing
Frequency: Four issues per year
Print ISSN: 0951-5224
Online ISSN: 1468-2273

Joint Editor: Professor Lee Harvey
 Lee is an acknowledged expert on issues of quality, employability and student feedback in higher education. Previously, Lee was the Director of the Centre for Research & Evaluation at Sheffield Hallam University, and Director of Research at the Higher Education Academy.

Joint Editor: Dr Celia Whitchurch is a Senior Lecturer in Higher Education at the Institute of Higher Education, University of London. Celia has published widely on institutional management and changing professional identities in higher education.



Research into Higher Education Abstracts

This aims for complete coverage of current UK work and selective overseas coverage.

Research into Higher Education Abstracts is a hugely valuable resource for anyone interested in research into higher education. The online database is easily accessible and the search options allow you to search by category, which is immensely helpful when investigating a particular topic area.

Published by: Taylor & Francis Group
Frequency: Three issues per year
Print ISSN: 0034-5326
Online ISSN: 1467-5862

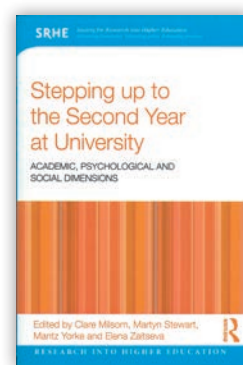
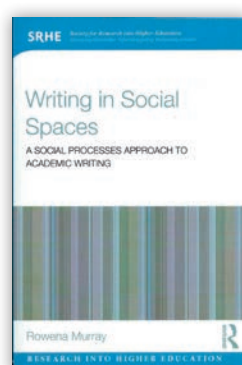
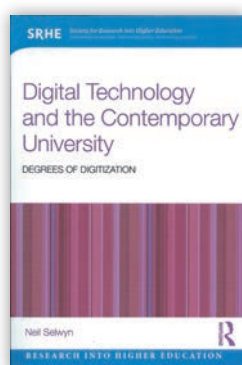
Editor: Dr Gerda Visser-Vijnveen, Leiden University, Netherlands
Associate Editor: Dr Roeland Van der Rijst, Leiden University, Netherlands

The first book in the SRHE/Routledge series was published in February 2012, and by the end of 2014, a total of eleven books have been published. The three books were published in 2014, as follows:

Digital technology and the Contemporary University, by Neil Selwyn (May 2014)

Writing in Social Spaces, by Rowena Murray (August 2014)

Stepping up to the Second Year at University, edited by Clare Milsom, Martyn Stewart, Mantz Yorke, Elena Zaitseva (December 2014)



Earlier titles in the series

Intellectual Leadership in Higher Education: Renewing the role of the university professor, by Bruce Macfarlane, (February 2012)

Strategic Curriculum Change: Global trends in universities, by Paul Blackmore and Camille B. Kandiko, (June 2012)

Reconstructing Identities in Higher Education: The rise of 'third space' professionals, by Celia Whitchurch, (October 2012)

The University in Dissent: Scholarship in the corporate university, by Gary Rolfe, (October 2012)

Everything for Sale? The Marketisation of UK Higher Education, by Roger Brown with Helen Carasso, (February 2013)

Women Leaders in Higher Education: Shattering the myths, by Tanya Fitzgerald (July 2013)

Researching Student Learning in Higher Education: A social realist approach, by Jennifer M. Case (August 2013)

Literacy in the Digital Age: Critical perspectives on learning, scholarship and technology, by Robin Goodfellow and Mary R. Lea (August 2013)

Submissions to the SRHE Series

The Society continues to invite book proposals for inclusion in the series and welcomes submissions from single authors, co-authors and edited collections.

Initial enquiries on possible submissions may be addressed to the SRHE Director at hsperkins@srhe.ac.uk

Series Editors: Professor Jeroen Huisman
jeroen.huisman@ugent.be

Professor Jenni Case, jenni.case@uct.ac.za

Publisher: Bruce Roberts, Routledge Books
Bruce.Roberts@tandf.co.uk

SRHE News & Blog

SRHE News is an in-house, quarterly publication, which is sent electronically to all members of the Society. It provides a comprehensive overview of higher education policy in the UK and beyond, features contributions from members across the globe, and details of upcoming events as well as reports on recent activities. Back issues are available from the members section of www.srhe.ac.uk

Editor: Professor Rob Cuthbert, University of the West of England, Rob.Cuthbert@uwe.ac.uk

A linked blogsite www.srheblog.com was launched in January 2014. It features short, topical articles on issues from policy to learning and teaching to the student experience and beyond, made by SRHE members as well as from further afield.

There has been a growing level of contributions made to this site, and we aim to make it the first place to look for news about research into HE.

Editor: Professor Rob Cuthbert, University of the West of England, Rob.Cuthbert@uwe.ac.uk



SRHE NETWORK EVENTS 2014

Below is brief summary of the SRHE Network events which took place in 2014 as an overview of the activity of our Networks. Further details are available from www.srhe.ac.uk/networks

SRHE Network	Event Title	Date
Higher Education Policy	Epistemic Access, Powerful Knowledge and the Role of Higher Education Policy	07/09/2012
Student Experience	Laddism and Higher Education	07/02/2014
Postgraduate Issues	Race, Ethnicity, Multiculturalism and Postgraduate Experiences	25/02/2014
International Research & Researchers	Home and Away- Chinese students perspectives on higher education in China and the UK	04/03/2014
Digital University	The digital and the material: mapping contemporary student practices	28/03/2014
Higher Education Policy	Interrogating the Higher Education Research / Policy Interface	02/04/2014
South West Regional	Capitalist Markets in Higher Education	16/04/2014
Employability, Enterprise & Work-based learning	Why do Internships and Placements matter? Further sharing of current research	02/05/2014
Access and Widening Participation	Exploring Gender issues within Higher Education: Forced Marriages and Violence against Women	08/05/2014
Academic Practice	Still divided cultures? Researching the practice interactions of art and science	09/05/2014
Postgraduate Issues	Doctoral Supervision Dilemmas & Resolutions	19/05/2014
Postgraduate Issues	Challenges of Doctoral Examining	20/05/2014
Access and Widening Participation	Religion and Belief in Higher Education	29/05/2014
Student Experience	Student Unions and the Changing Nature of Student Leadership in the UK	02/06/2014
Joint Network Event	Perspectives on Submission and Completion of the Doctorate	13/06/2014
Higher Education Policy	Higher Education Policy and the Teaching-Research Nexus	18/06/2014
International Research & Researchers	Pushing at the academy doors: International developments in HE-based lifelong learning	19/06/2014
South West Regional	Re-imagining the Future of Higher Education: Exploring the co-operative university	19/06/2014
Access and Widening Participation	Revisiting diversity in higher education	08/07/2014
Joint Network Event	European Higher Education – exploring effective strategies for turbulent times: University of Porto, Portugal	01/09/2014
Postgraduate Issues	Dimensions of well-being in postgraduate education	24/09/2014
Employability, Enterprise & Work-based learning	Supporting University-Work Transitions? Exploring the Impact of Work Placements and Internships	24/10/2014
International Research & Researchers	International perspectives on doctoral education	30/10/2014
South West Regional	Intrinsic and internalized modes of teaching motivation	30/10/2014
Digital University	Theorising Technology in Digital Higher Education	03/11/2014
Post-Compulsory Education	HE in FE: becoming established in the field?	06/11/2014
Postgraduate Issues	Where does theory come from in the doctoral project?	10/11/2014

A total of around 600 delegates attended the above events, with 50% being SRHE members, 50% non-members.

The Society continues to offer a series of professional development to support student and postgraduate researchers, to help build capacity in higher education. Below is a list of workshops offered during 2014, which were attended by a total of approximately 300 delegates, with an average of 25 delegates per workshop.

Details of the 2015 programme of these workshops are now available from www.srhe.ac.uk

Event Title	Date	Delivered/Facilitated by
Phenomenography: an approach to analysing interview data in HE	20/03/2014	Professor Paul Ashwin, Lancaster University
Research Approaches and Methods	21/03/2014	Professor Pam Denicolo and Dr Dawn Duke, University of Surrey
Academic Writing Skills	24/04/2014	Professor Rowena Murray, University of the West of Scotland
One-day Writing Retreat	25/04/2014	Professor Rowena Murray, University of the West of Scotland
Undertaking a Literature Review	14/05/2014	Dr Christopher Hart, University of Chester
Preparing Research Proposals	16/05/2014	Professor Pam Denicolo and Dr Carol Spencely, University of Surrey
Demystifying and Preparing for the Doctoral Viva	24/06/2014	Professor Pam Denicolo and Dr Dawn Duke, University of Surrey
The challenges of analysing qualitative data	25/06/2014	Professor Sue Clegg and Professor Jacqueline Stevenson, Leeds Beckett University
Publishing Academic Articles: A way through the maze	02/07/2014	Professor Ian McNay, University of Greenwich, Ian White, Routledge, Taylor and Francis
Academic Writing Skills (Glasgow)	30/09/2014	Professor Rowena Murray, University of the West of Scotland
One day Writing Retreat (Glasgow)	01/10/2014	Professor Rowena Murray, University of the West of Scotland
Publishing academic articles: A way through the maze	12/11/2014	Dr Karen Smith, University of Greenwich, Ian White, Routledge, Taylor and Francis



The Society's turnover has grown once again to £737k (against £666k last year). This increase is mainly due to an 8% increase in income from membership subscriptions and the new contractual arrangements for the Society's publications put in place for 2015-2019. The *Studies in Higher Education* journal continues to make a significant contribution to the income and reputation of the Society, which accounts for a large proportion of the £300k+ received from periodicals and royalties.

Reserves have grown slightly (now at £778k compared with 739k last year), £225k of which forms a semi-permanent contingency fund, leaving potentially £500k as an expendable reserve for special projects over the next few years.

Expenditure is gradually increasing in proportion with this increased income (now at 717k compared with £702k last year), which is in line with the increasing number of events and activities offered. Further cost increases are sustainable given the security of the Society's recently secured publications contract, which will ensure income remains stable for the next 5 years from 2015 to 2019.

A full financial review of all expenditure has been scheduled to be in line with the next rent review on the Society's current premises in August 2016, and before the process for the next re-tendering of the contract for the Society's publications nears in 2016/17.

In the meantime, the Society remains comfortably placed to deal not only with ever increasing costs, but also has financial capacity for embarking on further planned activities to the extent of up to say £100k per annum over the next few years. 2015 in particular will see increased activity expenditure as the Society marks its 50th Anniversary with additional events and publications, having been established in December 1965.

The thanks of the Treasurer need, as ever, to be recorded to the SRHE Team and the Director Helen Perkins, for the thoughtful and responsible management of the Society's income and expenditure.

Finally, I am pleased to confirm once again that the SRHE is fully compliant with all requirements stipulated by the Charity Commission, and is thus in possession of a 'clean bill of health' in financial terms for 2013-14.



MR DAVID PALFREYMAN, MA, MBA, LLB, FRSA

STATEMENT OF FINANCIAL ACTIVITIES (SOFA) FOR YEAR ENDING 31 JULY 2014

21

(Including Income and Expenditure Account) for the year ended 31 July 2014

		Unrestricted Funds 2014 £	Restricted Funds 2014 £	Total Funds 2014 £	Total Funds 2013
	£				
Incoming Resources					
<i>Incoming resources from generated funds:</i>					
Voluntary income					
Donations and grants	2.	7,500	–	7,500	7,500
Activities for generating funds					
Investment income	3.	14,067	225	14,292	19,330
Incoming resources from charitable activities:					
Subscriptions	4.	160,300	–	160,300	148,928
Miscellaneous income		35,726	–	35,726	4,478
Conference revenue		215,746	–	215,746	180,307
Publication sales		362	–	362	564
Periodicals and royalties		303,370	–	303,370	304,740
Total Incoming Resources		737,071	225	737,296	665,847
Resources Expended					
Cost of generating funds					
Costs of generating voluntary income	5.	2,713	–	2,713	1,389
Charitable activities	5.	709,168	1,027	710,195	695,094
Governance costs	5.	5,575	–	5,575	5,200
Total Resources Expended		717,456	1,027	718,483	701,683
Net outgoing resources		19,615	(802)	18,813	(35,836)
Unrealised gain on revaluation of investments	11.	19,674	–	19,674	8,961
Net outgoing resources and net movement in funds	6.	(39,289)	(802)	(38,487)	(26,875)
Reconciliation of funds					
Total funds brought forward		681,863	57,273	739,136	766,011
Total funds carried forward		721,152	56,471	777,623	739,139

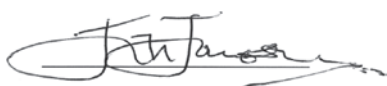
The Statement of Financial Activities includes all gains and losses in the year.
All incoming resources and resources expended derive from continuing activities.

BALANCE SHEET AT 31 JULY 2014

	Note	2014		2013	
		£	£	£	£
Fixed Assets					
Tangible assets	10.		19,554		31,915
Investments	11.		347,877		316,170
			<u>367,431</u>		<u>348,085</u>
Current Assets					
Stock of guides		—		—	
Debtors	12.	36,593		49,275	
Cash at bank and in hand		596,520		540,071	
		<u>633,113</u>		<u>589,346</u>	
Creditors					
Amounts falling due within one year	13.	(222,921)		(198,295)	
Net Current Assets			<u>410,192</u>		<u>391,051</u>
Net Assets	15.		<u>777,623</u>		<u>739,135</u>
Unrestricted Funds					
General Fund	14.		721,152		681,863
Designated Funds	14.		—		—
Restricted Funds	14.		<u>56,471</u>		<u>57,273</u>
Total Funds			<u>777,623</u>		<u>739,136</u>

The financial statements have been prepared in accordance with the provisions applicable to companies subject to the small companies regime under the Companies Act 2006 and the Financial Reporting Standard for Smaller Entities (effective April 2008).

Approved and authorised for issue by the Governing Council on 24th October 2014 and signed on its behalf by:



J JAMESON



D PALFREYMAN

The Society for Research into Higher Education (SRHE) is an independent and financially self-supporting international learned Society.

It is concerned to advance understanding of higher education, especially through the insights, perspectives and knowledge offered by systematic research and scholarship.

The Society's primary role is to improve the quality of higher education through facilitating knowledge exchange, discourse and publication of research. SRHE members are worldwide and the Society is an NGO in operational relations with UNESCO.

The Society has a wide set of aims and objectives. Amongst its many activities the Society:

- is a specialist publisher of higher education research, journals and books, amongst them **Studies in Higher Education, Higher Education Quarterly, Research into Higher Education Abstracts** and a long running monograph book series.
- funds and supports a large number of special interest networks for researchers and practitioners working in higher education from every discipline. These networks are open to all and offer a range of topical seminars, workshops and other events throughout the year ensuring the Society is in touch with all current research knowledge.

- runs the largest annual UK-based higher education research conference and parallel conference for postgraduate and newer researchers. This is attended by researchers from over 35 countries and showcases current research across every aspect of higher education.

SRHE membership benefits include:

- Free attendance at SRHE network events
- Reduced rate journal subscriptions and books from a range of publisher catalogues
- Discounted rates for the SRHE conference
- Free subscription to Research into Higher Education Abstracts & SRHE News
- The opportunity to apply for annual member research grants
- On-line access to a number of Higher Education journals.

To find out more visit
www.srhe.ac.uk and click on 'Join us'

SRHE

Society for Research into Higher Education

Advancing knowledge Informing policy Enhancing practice

73 Collier Street
London N1 9BE
United Kingdom

T +44 (0)20 7427 2350
F +44 (0)20 7278 1135
E srheoffice@srhe.ac.uk

www.srhe.ac.uk

Director: Helen Perkins
Registered Charity No. 313850
Company No. 00868820
Limited by Guarantee
Registered office as above