

SRHE Annual Report

2015



SRHE

Society for Research into Higher Education
Advancing knowledge Informing policy Enhancing practice

73 Collier Street
London N1 9BE
United Kingdom

T +44 (0)20 7427 2350
F +44 (0)20 7278 1135
E srheoffice@srhe.ac.uk

www.srhe.ac.uk

Director: Helen Perkins
Registered Charity No. 313850
Company No. 00868820
Limited by Guarantee
Registered office as above

CONTENTS

| | |
|----|--|
| 1 | COMPANY INFORMATION |
| 2 | FELLOWS |
| 4 | CHAIR'S INTRODUCTION |
| 5 | A WORD FROM THE SOCIETY'S DIRECTOR |
| 6 | MEMBERSHIP UPDATE |
| 9 | STANDING COMMITTEES (AS AT 16TH OCTOBER 2015) |
| 10 | SRHE CONFERENCE 2015 |
| 11 | SRHE RESEARCH AWARDS 2015 |
| 12 | NEWER RESEARCHER AWARD WINNERS 2015 |
| 13 | SRHE PUBLICATIONS |
| 15 | SRHE 50TH ANNIVERSARY COLLOQUIUM (BY PROFESSOR ROB CUTHBERT, SRHE NEWS EDITOR) |
| 16 | SRHE NETWORK EVENTS 2015 |
| 17 | PROFESSIONAL DEVELOPMENT WORKSHOPS 2015 |
| 18 | HONORARY TREASURER'S REPORT |
| 19 | STATEMENT OF FINANCIAL ACTIVITIES 2014-2015 |

Administrative Details

This is the 2014-15 Annual Report for the Society for Research into Higher Education (SRHE).

The Society is a charity registered with the UK Charity Commission – reference number 313850.

The Society is also a Limited Company, registration number 868820. The registered office for the

Society into Research into Higher Education is: 73 Collier Street, London N1 9BE

This is also the principal and sole office of the Society.

Trustees (Governing Council Officers) at 22nd October 2015

Chair: Professor Jill Jameson, University of Greenwich

Honorary Treasurer: Mr David Palfreyman, New College, University of Oxford

Governing Council Members:

Professor Paul Ashwin, Lancaster University

Professor Paul Blackmore, King's College, London

Professor Penny-Jane Burke, University of Roehampton/University of Newcastle, Australia

Dr Helen Carasso, University of Oxford

Professor Sue Clegg, Leeds Beckett University

Dr Kelly Coate, King's College, London

Professor Linda Evans, University of Leeds

Dr David Hay, King's College, London

Professor Ian Kinchin, University of Surrey

Professor Sue Law, University of Leicester

Mr William Locke, UCL Institute of Education, University College London

Professor Chris Pole, University of Brighton

Dr Karen Smith, University of Hertfordshire

Professor Denise Whitelock, Open University

Director and Company Secretary

Helen Perkins

Executive

Franco Carta Finance Officer

Rob Gresham Manager: Operations & Finance

Nicola Manches Administration Officer

Francois Smit: Consultant Conference and Events Organiser

President

Professor Sir Robert Burgess

Vice-Presidents

Professor Roger Brown

Professor Sir Peter Scott

Dr Mary-Louise Kearney

Professor Sir William Taylor

Baroness Sharp of Guildford

Professor Ulrich Teichler

FELLOWS

Fellows

| <i>Name</i> | <i>Affiliation</i> | <i>Appointed</i> |
|------------------------------|--|------------------|
| Professor Marcia Devlin | Federation University Australia | January 2014 |
| Professor Christine Musselin | Institut d'Etudes Politiques de Paris | January 2014 |
| Professor Lee Harvey | Copenhagen Business School | January 2013 |
| Professor Bruce Macfarlane | University of Southampton | January 2013 |
| Professor Monica McLean | University of Nottingham | January 2013 |
| Professor Patrick Ainley | University of Greenwich | January 2012 |
| Professor Carole Leathwood | London Metropolitan University | January 2012 |
| Professor Jeroen Huisman | University of Ghent | January 2012 |
| Professor Lynn McAlpine | University of Oxford/ McGill | January 2012 |
| Professor Rob Cuthbert | University of West of England | January 2011 |
| Professor Claire Callender | Birkbeck, University of London & UCL Institute of Education | January 2011 |
| Professor Paul Trowler | University of Lancaster | January 2011 |
| Professor Ian McNay | University of Greenwich | January 2011 |
| Professor Rosemary Deem | Royal Holloway, University of London | January 2010 |
| Professor Kerri-Lee Krause | Griffith University Australia | January 2010 |
| Professor Robin Middlehurst | Kingston University | January 2010 |
| Professor John Richardson | Open University | January 2010 |
| Professor Ulrich Teichler | University Kassel | January 2009 |
| Professor Angela Brew | University of Sydney | January 2008 |
| Professor Gunnar Handal | University of Oslo | January 2008 |
| Professor Dai Hounsell | University of Edinburgh | January 2008 |
| Professor Louise Morley | University of Sussex | January 2008 |
| Professor Michael Shattock | UCL Institute of Education | January 2008 |
| Professor Mantz Yorke | Liverpool John Moores University | January 2008 |
| Professor John Brennan | Open University | January 2006 |
| Professor Oliver Fulton | University of Lancaster | January 2006 |
| Professor Malcolm Tight | University of Lancaster | January 2006 |
| Professor Ted Tapper | University of Sussex | January 2006 |
| Professor Simon Marginson | University of Sydney, Australia | January 2004 |
| Professor Gareth Parry | University of Sheffield | January 2004 |
| Mr John Skelton | Open University Press | January 2004 |
| Professor Gareth Williams | UCL Institute of Education | January 2003 |
| Professor Noel Entwistle | University of Edinburgh | January 2002 |
| Professor David Dill | University of North Carolina | January 2001 |
| Professor James Ratcliffe | Pennsylvania State University | January 2001 |

| | | |
|-----------------------------|------------------------------------|--------------|
| Ms Harriet Croft | University of the West of England | January 2000 |
| Dr Peter Maassen | University of Oslo, Norway | January 2000 |
| Professor Ronald Barnett | UCL Institute of Education | January 1998 |
| Professor Mary Henkel | Brunel University | January 1998 |
| Dr John Wyatt | University of Chichester | January 1998 |
| Dr Marianne Bauer | University of Gothenburg | January 1997 |
| Professor Ingrid Moses | University of New England | January 1996 |
| Professor Sheldon Rothblatt | University of California | January 1996 |
| Professor Sinclair Goodlad | Imperial College London | January 1993 |
| Professor Ference Marton | University of Gothenburg | January 1992 |
| Professor David Boud | University of Technology Sydney | January 1991 |
| Professor Lewis Elton | University College London | January 1991 |
| Professor John Pratt | University of East London | January 1991 |
| Professor Sir Peter Scott | UCL Institute of Education, London | January 1991 |
| Professor Alan Smithers | University of Buckingham | January 1991 |

Honorary Fellows:

| | | |
|--------------------------|------------------------------------|------|
| Professor Michael Peters | University of Waikato, New Zealand | 2010 |
| Professor Jurgen Enders | University of Bath | 2011 |

Lifetime Achievement Award:

| | | |
|-------------------|---------------------------------|------|
| Ms Renate Simpson | Historian / University of Essex | 2010 |
|-------------------|---------------------------------|------|



Financial year August 2014 – July 2015
Reporting year January 2015 – December 2015

The year 2014-15 has been a period in which the Society for Research into Higher Education has experienced many successes. A large increase in numbers for the Annual Research Conference (ARC) 2015, with 433 delegates attending (compared with 356 in 2014), and 294 paper presentations (compared with 252 in 2014), was matched by a significant increase in delegates attending the Newer Researchers' (NR) conference, at which there were 131 attendees (compared with 89 in 2014).

Excellent work achieved by both the SRHE team and by members of the Society in the organisation and review of, respectively, a 20% (ARC) and 50% (NR) increase in conference papers and sessions was also seen in increased SRHE Research Awards in 2015, with 90 proposals received, nine awards conferred, and a research awards budget now standing at £75,000. Similar successes were achieved in a 27% increase in members overall, and in the excellent take-up of and feedback on a large number of research network events held during the year.

The highlighted accomplishment of the year was, however, undoubtedly the SRHE 50th Anniversary Colloquium and Reception at the House of Lords held on 26 June 2015. This major event was outstandingly successful, with a varied range of thoughtful and challenging speeches presented on the day. These were reported in a large number of messages of appreciation in both press and social media coverage. The significant additional work involved in effectively hosting this important celebration in two new venues was recognised and the SRHE team in particular were thanked for all of their hard work and achievements this year.

As part of the 50th year celebrations, our thanks were due to Professor Michael Shattock

for his voluntary production of a booklet entitled *The SRHE and the changing world of British HE* – a study of SRHE over its first 25 years and to all those involved in the 50th anniversary edited book collection of *Researching Higher Education - International perspectives on theory, policy and practice*.

Further good news came during the past year in the launch of the new journal *Policy Reviews in Higher Education* with its two editors, William Locke and Professor Bruce Macfarlane, while significant progress was achieved in appointing a renewed editorial team for *Higher Education Quarterly*, with Dr Tatiana Fumasoli and Dr Tommaso Agasisti joining Dr Celia Whitchurch as HEQ Co-Editors.

Additional important work by the Society was accomplished in the autumn of 2015 in the calling together of two very well-attended special consultation meetings on the Department for Business, Innovation and Skills 2015 Green Paper on higher education: *Fulfilling our Potential: Teaching Excellence, Social Mobility and Student Choice*. The President of the Society, Professor Sir Robert Burgess, was amongst those presenting helpful contributions to the two meetings held to consult with around 150 attendees. The Director of the Society effectively summed up the Society's official response, submitting this to BIS in good time on behalf of Members.

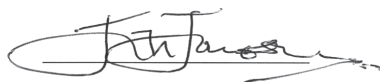
Alongside many achievements this year, it has been important also to note some areas of work in which the Society can improve its activities. Amongst these, importantly, is the recognition that our impact on higher education policy and wider society can improve, as can the international reach of the Society's work as regards conference attendance and membership engagement. Future strategy will be a key area of discussion for the trustees in

2016, and a new online approach to support newer researchers is already in place for 2016-17, as is a new focus on policy for commissioned research.

With this recognition, I note that, despite many accomplishments this year, we can always improve in serving the mission of the Society, and this, enthusiastically, we will aim continuously to do.

In nearing closer towards the end of my term of office on 31st December, 2016, it remains for me to say that I have once again felt that it has been both a pleasure and a great honour to serve as Chair of the Society during our 50th Anniversary Year of 2014-15.

I sincerely thank all of those who have made our many successes possible, including the Director, Helen Perkins, the SRHE team, Rob, Francois, Franco and Nicola, the President, Bob Burgess, Members of Governing Council, our Committee Chairs and Members, Keynote Speakers and Presenters, Network Convenors, Editors, Reviewers and all Members of the Society. Your work and many important contributions for the Society continue to be greatly appreciated.

A handwritten signature in black ink, appearing to read 'Jill Jameson', with a stylized flourish extending to the right.

PROFESSOR JILL JAMESON, *Chair*

A WORD FROM THE SOCIETY'S DIRECTOR



Financial year August 2014 – July 2015
Reporting year January 2015 – December 2015

The Society for Research into Higher Education was established and incorporated in December 1965 and so 2015 has been a very significant year for the Society, providing the opportunity to mark the 50th Anniversary of the formation of the Society. This financial year was also my tenth year as Director of SRHE and these combined anniversaries has prompted much reflection on how the Society, and the field of research into higher education, has evolved and progressed over this time.

The actual 50th Anniversary events, particularly the Colloquium and Members Reception have been well documented and commented on covered elsewhere in this report so I thought I would reflect on how the Society as a member organisation has grown and developed and look at the challenges that lie ahead.

Planning the anniversary events in practical terms was not for us the significant challenge, since running a full events programme throughout the year has been one of the significant developments for members in recent years. What has been challenging has been mapping the Society's growth and development since its formation in December 1965 against the backdrop of enormous change and upheaval in higher education, both in the UK and in a global context too. This remains work in progress. We are greatly indebted to Professor Michael Shattock OBE for his contribution to the Anniversary with his research on The Society for Research into Higher education and the changing world of higher education: a study of SRHE over its first 25 years. In addition to his own immense contribution to both research into higher education and to the Society, Mike Shattock was also instrumental in setting up the Society's archive, kindly hosted through his efforts by the University of Warwick. Mike also contributed all his own papers from his association with the Society to the archive, offering one of the best set of records the Society has from this period.

This work on researching the Society's history and the contexts, socially and politically, has underpinned the crucial importance of maintaining a well-managed and catalogued archive. We intend to work on improving this and ensuring its future maintenance. In addition work on Volume 2 of the Society's history is already underway with Professors Ian McNay and Rob Cuthbert taking over to cover this period.

Looking back over just the last ten years the Society has transformed into a much more actively engaged organisation and one with much better and closer connections with a membership which is truly global. We head into 2016 in a sound financial position, with a growing membership which edges ever closer to our next target of 1,000 members. In the context of some the oldest and largest scholarly organisations this might seem a meagre amount but in the social sciences, where less than a handful of learned societies have member numbers in the high hundreds, this puts us in the top tier.

A simple glance at the events calendar in this report will show a wide and extensive range of network seminars and professional development workshops held weekly sitting alongside our annual conferences. We also head into 2016 with an impressive and high performing publications portfolio to be augmented in 2016 with the first issue of our new journal, *Policy Reviews in Higher Education*. Growing, sustaining and supporting our membership is going to be a major feature in our strategic planning going forward and I hope we can look to both our current members, and to others currently engaged with the Society in some way, to come forward with ideas on what they look for from their learned society so that we can meet and deliver on these expectations.

HELEN PERKINS, *Director*



Current membership benefits

- Substantial discounts on rates for SRHE Annual Conference
- Free attendance at any SRHE Seminars and SRHE supported events
- Free subscription to Research into Higher Education Abstracts, including on-line access to the current issue and the full on-line archive of Abstracts
- On-line access to Higher Education (HE) journals such as Teaching in HE, Assessment & Evaluation in HE, European Journal of HE, Innovations in Education and Teaching International, Journal of Marketing for HE, Perspectives: Policy and Practice in HE, and Quality in HE
- Reduced rates for Studies in Higher Education (over 50% reduction on subscription rates) and free on-line access to the journal archive
- Free copies of SRHE News, providing an international review of all that is current in research into HE
- 30% discount on all books published by Routledge/Taylor and Francis
- 20% discount on all books and journals published by Wiley Publishing
- The opportunity to apply for the annual research grants
- The opportunity to participate in the Society's Networks
- Access to – and inclusion in – the Register of Members' Research Interests – to help facilitate networking between the Society's members
- Reduced rates for Higher Education Quarterly
- A reduced Article Processing Charge (APC) for Gold Open Access publication in the Studies in Higher Education journal

Membership rates for 2015-16

| | |
|--|----------------|
| <i>Standard Membership</i> | <i>£100.00</i> |
| <i>Retired (annual subscription)</i> | <i>£45.00</i> |
| <i>Retired (lifetime membership)</i> | <i>£300.00</i> |
| <i>Student</i> | <i>£35.00</i> |
| <i>Studies in Higher Education (Member rate personal subscription)</i> | <i>£60.00</i> |
| <i>Higher Education Quarterly (Member rate personal subscription)</i> | <i>£35.00</i> |

Current Membership Numbers (in comparison with this time last year)

| <i>Member Group</i> | <i>At 17th October 2014</i> | <i>At 16th October 2015</i> | <i>% Change</i> |
|-------------------------|-----------------------------|-----------------------------|--------------------|
| <i>Individual</i> | <i>505</i> | <i>611</i> | <i>+21%</i> |
| <i>Retired</i> | <i>71</i> | <i>69</i> | <i>-3%</i> |
| <i>Student</i> | <i>197</i> | <i>174</i> | <i>-12%</i> |
| <i>TOTAL</i> | <i>774</i> | <i>854</i> | <i>+10%</i> |
| <i>Guest members</i> | <i>1,924</i> | <i>2,530</i> | <i>+31%</i> |
| <i>All member types</i> | <i>2,698</i> | <i>3,384</i> | <i>+25%</i> |

MEMBERSHIP UPDATE cont.

Membership Numbers

As the above table indicates, membership numbers continue to grow encouragingly. The increase in individual membership appears to come from a combination of the (member only) research awards, member discounts for conference registration, and network/professional development programme attendance. Guest Members are either those who have registered to attend one or more SRHE events as non-members plus those whose membership has recently expired.

Membership Income

Subscriptions payments exceeded the annual budgeted target of £50,000 with over £62,000 received between 1st August 2014 and 31st July 2015 – an increase of around £6k on the previous year. Once year- end adjustments were made by the auditors (note this is required as all membership payments are made in advance) the figure rises slightly to £68k, compared with £60k the previous year.

Membership types and categories

The table below shows the membership mix across the 3 categories over the past 3 years, which confirms the increase from the individual category of membership, and the slight fall in student membership. Various strategies to attract new student members are planned for 2016.

| <i>Membership type</i> | <i>Individual</i> | <i>Student</i> | <i>Retired</i> |
|------------------------|-------------------|----------------|----------------|
| 2013 | 57% | 33% | 10% |
| 2014 | 64% | 27% | 9% |
| 2015 | 71% | 21% | 8% |

International Membership

In terms of the UK/ International split, the proportion of UK-based members remains 81%, exactly the same as in 2014. Attracting further international members continues to be a priority, and greater use of on-line events, accessible to all members regardless of where they are physically based.



ROB GRESHAM,
Manager: Operations & Finance

Management and Finance Committee

Chair: Professor Jill Jameson, University of Greenwich

Committee members:

Dr Helen Carasso, Vice-Chair
Professor Sue Clegg, Chair- Publications Committee
Professor Linda Evans, Vice-Chair
Professor Sue Law, Council representative
Mr David Palfreyman, Honorary Treasurer
Professor Chris Pole, Council representative

Publications Committee

Chair: Professor Sue Clegg, Leeds Beckett University

Committee members:

Professor Penny Jane Burke, University of Roehampton
Dr Kelly Coate, King's College, London
Professor Rob Cuthbert, Editor, SRHE News (University of the West of England)
Dr David Hay, King's College, London
Professor Jeroen Huisman, Series Editor SRHE Book Series-(University of Ghent, Belgium)
Mr William Locke, Co-editor, Policy Reviews in HE (UCL Institute of Education)
Dr Lisa Lucas, University of Bristol
Professor Ian McNay, University of Greenwich
Mr David Palfreyman, SRHE Hon Treasurer (University of Oxford)
Professor John Richardson, Associate Editor, Studies in Higher Education (Open University)
Dr Roeland van der Rijst, Associate Editor: Research into HE Abstracts (University of Leiden)
Dr Karen Smith, University of Hertfordshire
Dr Gerda Visser-Vijnveen, Editor: Research into HE Abstracts (University of Leiden)
Dr Celia Whitchurch, Editor: HE Quarterly (UCL Institute of Education)

Research and Development Committee

Acting Chair: Professor Jill Jameson, University of Greenwich

Committee members:

Professor Paul Ashwin, Lancaster University
Mr Patrick Baughan, City University London
Professor Paul Blackmore, King's College London
Professor Claire Callender, Birkbeck, University of London & UCL Institute of Education
Professor Vicky Gunn, Glasgow School of Art
Dr Anesa Hosein, University of Surrey
Dr Camille Kandiko-Howson, King's College, London
Professor Ian Kinchin, University of Surrey
Professor Bruce Macfarlane, University of Southampton
Professor Monica McLean, University of Nottingham
Dr Justine Mercer, University of Warwick
Dr Georgy Petrov, Kingston University
Mr Steve Woodfield, Kingston University

Converging Concepts in Global Higher Education Research: Local, national and international perspectives

Annual Research Conference

9-11 December 2015, Celtic Manor, Newport.

The 2015 Conference marked the 50th Anniversary of the SRHE, and over 430 delegates were able to participate, 60% of whom were SRHE members, so this made for a good mix of new and familiar faces.

Highlights included keynotes from Professor Simon Marginson and Professor Susan Robertson, and video coverage of their keynotes, plus interviews conducted with our SRHE News & Blog editor Professor Rob Cuthbert are available from the SRHE website at www.srhe.ac.uk/conference2015

Over 300 papers were presented and discussed across numerous strands, along with Research Domain Discussion Groups, book launches, the Society's AGM and a broad range of symposiums, poster and paper presentations.

Note the dates for the 2016 SRHE Conference: **7-9 December 2016**, at the Celtic Manor Resort, Newport, Wales UK.

SRHE Newer Researcher Conference

8 December 2015, Celtic Manor, Newport.

This event specifically targets postgraduate researchers and those newer to the field of Higher Education research to share their work in a supportive and developmental environment. Over 110 papers were presented and discussed, and Professor Linda Evans from the University of Leeds kindly provided the keynote address entitled 'Minding your Ps and Qs: how to stand out from the crowd, as an academic' www.srhe.ac.uk/conference2015

Over 30 research posters were also presented, which added a welcome visual and discursive element to proceedings, and our congratulations go to the two winners of the 'Best Research Poster' competition, Sam Dent from Sheffield Hallam University and Jennie Shorley from Manchester Metropolitan University. These posters can be viewed at <http://www.srhe.ac.uk/conference2015/newer-researchers-conference.asp>

Note that the 2016 Newer Researcher Conference will take place at Celtic Manor on **Tuesday 6th December 2016**.



After peer review and selection panel discussion and agreement, the Society made the following awards:

- Six Member-only awards of £10,000 each for research focused on any aspect of higher education
- Three Scoping awards of £5,000 each for the exploration of any new or emerging area of higher education research leading to the development of a plan for further research. Scoping awards were open to all and applications were received from members and non-members of the Society.



The Society is pleased to record the awards made in 2015 were as follows:

Research Awards 2015: 6 awards of £10,000 each

Everyday student mobilities: Exploring the relationship between wellbeing, inclusion and sustainability (Dr. Kirsty Finn, Lancaster University)

Student Perception of Graduate Attributes: A Signalling Theory Perspective (Prof. Anna Jones, Glasgow Caledonian University, Dr. Judy Pate, University of Glasgow)

Knowledge creation in higher education studies: an intergenerational analysis (Prof. Bruce Macfarlane, University of Southampton)

Appointing for Diversity: Can 'Old' Universities Learn from the Experience of the 'New'? (Dr. Sue Shepherd, University of Kent)

What role does (or should) higher education research play in higher education policy? An exploratory study (Dr. Karen Smith, University of Hertfordshire, Dr. Scott Fernie, Loughborough University, Dr. Nick Pilcher, Edinburgh Napier University)

Educational Justice for All? How UK Universities Are Rethinking Educational Equality and Justice in the Context of Higher Education Internationalisation (Dr. Stuart Tannock, UCL Institute of Education, University College London)

Scoping Awards 2015: 3 awards of £5,000 each

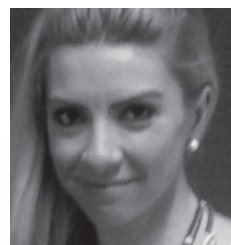
Social Participation in Wales at Age 50: a comparison of 'elite HE system' graduates' and non-graduates' engagement in civil society (Dr. Ceryn Evans, Cardiff University)

The origins and history of university professors and professorship in the UK (Professor Linda Evans, University of Leeds)

Exploring the Paradigms of Higher Education Research: Emerging Research Discourses in China and the UK (Dr. Ourania Filippakou and Professor Catherine Montgomery, University of Hull)

Further information on the Society's Awards is available from www.srhe.ac.uk under the 'Research' section.

NEWER RESEARCHER AWARD WINNERS 2015



DR MARILENA ANTONIADOU, Senior Lecturer in Management at the Manchester Metropolitan University Business School has been awarded the 2015 Prize for her proposal entitled:

“On being an international academic: an exploration of the emotional experiences of international academics in the UK’s Higher Education”

Drawing on a phenomenological approach, her PhD thesis explored the emotionality of academics in the context of the Cypriot academia. Prior to her current post, she was a lecturer of public and human relations in Cyprus from 2006 to 2008.

Marilena holds a degree in communications and mass media from the University of Athens, a MA in Public Relations and a Masters of Research from the Manchester Metropolitan University. Whilst working, Marilena is now completing a third MA in Academic Practice. She is a Chartered member of the CIPD and a Fellow of the Higher Education Academy.

Her research interests cover the areas of discrete emotions, organisational phenomenology and narratives. Her management role as a Year tutor in her University has also generated a research interest in the role of social support to the undergraduate student experience in higher education.

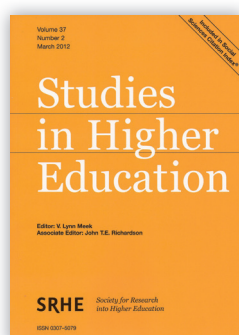
The SRHE funded project will allow Marilena to explore the phenomenon of being an international academic in the UK, through the lens of their emotions. The project specifically aims to uncover the meaning of working across cultural-educational settings and examine the lived emotional experiences of international academics during their transition, teaching and social interactions.

DR EMMA MEDLAND, Lecturer in the Department of Higher Education at the University of Surrey was awarded the 2015 Prize for her proposal entitled:

“Examining the Examiner: Investigating the assessment literacy of external examiners”

Emma joined the Department of Higher Education at the University of Surrey in September 2013 as a Lecturer in Higher Education. She has responsibility for the Continuing Professional Development provision offered by the Department and teaches on the Graduate Certificate in Teaching and Learning, as well as leading on various institution-wide and bespoke sessions. Prior to her role at the University of Surrey, Emma was a lecturer with the King’s Learning Institute, King’s College London from 2007, where she was the Programme Director of the Postgraduate Certificate in Academic Practice. During her time at KLI, Emma was also the academic lead on an institution wide initiative involving the review and enhancement of assessment and feedback practices (further details of this initiative may be located here: <http://www.kcl.ac.uk/study/learningteaching/kli/assess>).

Emma holds a first degree in Education Studies and Psychology from Lancaster University and a Masters in Research Methods in Psychology from the University of Surrey. She was awarded her PhD by the University of Surrey in 2009; her thesis title was Self-Theories of Emotional Intelligence in Higher Education: Assessment feedback and non-continuation. Her PhD research informed Emma’s interest in assessment and feedback in Higher Education, which has increasingly defined her role.

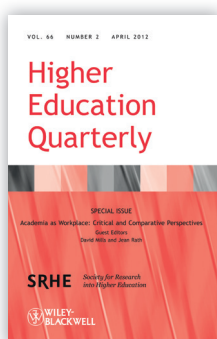


Studies in Higher Education

This journal has a wide ranging interest in higher education and the social and institutional contexts within which it takes place, but gives particular emphasis to education as practice, with a view to influencing its development.

Published by: Routledge Taylor & Francis Group
Frequency: Eight issues per year plus two special issues in 2014 and 2015
Print ISSN: 0307-5079
Online ISSN: 1470-174X

Editor: Professor V. Lynn Meek, University of Melbourne, Australia
Special Issues Editors: Dr Mary-Louise Kearney, OECD, France & Dr Dan Lincoln, Boston College, USA
Associate Editor: Professor John Richardson, Open University, UK.



Higher Education Quarterly

Higher Education Quarterly publishes articles concerned with policy, strategic management and ideas in higher education. A substantial part of its contents is concerned with reporting research findings in ways that bring out their relevance to senior managers and policy makers at institutional and national levels, and to academics who are not necessarily specialists in the academic study of higher education.

Higher Education Quarterly also publishes papers that are not based on empirical research but give thoughtful academic analyses of significant policy, management or academic issues.

Published by: Wiley Blackwell Publishing
Frequency: Four issues per year
Print ISSN: 0951-5224
Online ISSN: 1468-2273

Joint Editor: Professor Lee Harvey
 Lee is an acknowledged expert on issues of quality, employability and student feedback in higher education. Previously, Lee was the Director of the Centre for Research & Evaluation at Sheffield Hallam University, and Director of Research at the Higher Education Academy.

Joint Editor: Dr Celia Whitchurch is a Senior Lecturer in Higher Education at the Institute of Higher Education, University of London. Celia has published widely on institutional management and changing professional identities in higher education.



Research into Higher Education Abstracts

This aims for complete coverage of current UK work and selective overseas coverage.

Research into Higher Education Abstracts is a hugely valuable resource for anyone interested in research into higher education. The online database is easily accessible and the search options allow you to search by category, which is immensely helpful when investigating a particular topic area.

Published by: Taylor & Francis Group
Frequency: Three issues per year
Print ISSN: 0034-5326
Online ISSN: 1467-5862

Editor: Dr Gerda Visser-Vijnveen, Leiden University, Netherlands
Associate Editor: Dr Roeland Van der Rijst, Leiden University, Netherlands

SRHE/Routledge Book series

The first book in the SRHE/Routledge series was published in February 2012, and by the end of 2015, a total of 13 books had been published. The following two books were published in 2015:

Culture, Capitals and Graduate Futures: Degrees of class, by Ciaran Burke (September 2015)

Researching Higher Education: International perspectives on theory, policy and practice
Edited by Jennifer M. Case, Jeroen Huisman (October 2015)



Earlier titles in the series

Intellectual Leadership in Higher Education: Renewing the role of the university professor, by Bruce Macfarlane, (February 2012)

Strategic Curriculum Change: Global trends in universities, by Paul Blackmore and Camille B. Kandiko, (June 2012)

Reconstructing Identities in Higher Education: The rise of 'third space' professionals, by Celia Whitchurch, (October 2012)

The University in Dissent: Scholarship in the corporate university, by Gary Rolfe, (October 2012)

Everything for Sale? The Marketisation of UK Higher Education, by Roger Brown with Helen Carasso, (February 2013)

Women Leaders in Higher Education: Shattering the myths, by Tanya Fitzgerald (July 2013)

Researching Student Learning in Higher Education: A social realist approach, by Jennifer M. Case (August 2013)

Literacy in the Digital Age: Critical perspectives on learning, scholarship and technology, by Robin Goodfellow and Mary R. Lea (August 2013)

Digital technology and the Contemporary University, by Neil Selwyn (May 2014)

Writing in Social Spaces, by Rowena Murray (August 2014)

Stepping up to the Second Year at University, Edited by Clare Milsom, Martyn Stewart, Mantz Yorke, Elena Zaitseva (December 2014)

Submissions to the SRHE Series

The Society continues to invite book proposals for inclusion in the series and welcomes submissions from single authors, co-authors and edited collections.

Initial enquiries on possible submissions may be addressed to the SRHE Director at hsperkins@srhe.ac.uk

Series Editors: Professor Jeroen Huisman, jeroen.huisman@ugent.be

Professor Jenni Case, jenni.case@uct.ac.za

Publisher: Bruce Roberts, Routledge Books, Bruce.Roberts@tandf.co.uk

SRHE News & Blog

SRHE News is an in-house, quarterly publication, which is sent electronically to all members of the Society. It provides a comprehensive overview of higher education policy in the UK and beyond, features contributions from members across the globe, and details upcoming events as well as reports on recent activities. Back issues are available from the members section of www.srhe.ac.uk

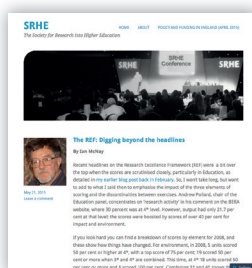
Editor: Professor Rob Cuthbert, University of the West of England, Rob.Cuthbert@uwe.ac.uk

The SRHE blogsite www.srheblog.com launched in January 2014, has grown in terms of articles and readership over 2015. It features short, topical articles on issues from policy to learning and teaching to the student experience and beyond, made by SRHE members as well as from further afield.

Editor: Professor Rob Cuthbert, University of the West of England, Rob.Cuthbert@uwe.ac.uk

SRHE & the Changing World of HE: The first 25 years

Professor Michael Shattock OBE, from the UCL Institute of Education, London has kindly put together a short history of the Society, tracing its origins in 1965 through to the 1980s, detailing the many changes and key events for the Society over this period. Printed copies of this booklet are available on request by e-mailing srhe@srhe.ac.uk and a pdf version is available from the SRHE Website.



SRHE 50TH ANNIVERSARY COLLOQUIUM

by Professor Rob Cuthbert, SRHE News Editor

Valuing Research into Higher Education

Advancing knowledge, informing policy, enhancing practice

It was an occasion to celebrate in every sense when the Society staged a Colloquium at Church House in Westminster on 26 June 2015, to celebrate its formation 50 years earlier when it was formally created by a Memorandum of Association on 31 December 1965.

How has the Society fared over these 50 years of tumultuous change? Michael Shattock is in no doubt:

In 2015 the Society has a much more secure base than it had in 1990 and is flourishing in a way that its founders in 1965 could only have dreamed of. The Society may not be so engaged in wider policy issues as it became in the 1980s and early 90s but it remains committed to the internal world of higher education in ways which resonate with the ideas of Nicholas Malleson and his colleagues when they founded the Society in the white heat of the post-Robbins debates.

How then should SRHE celebrate its 50th birthday? Director Helen Perkins set out the programme's four broad aims: to bring together individuals from different groups inside and outside HE; to raise the profile and value of research into HE; to look forward to a research agenda for the next 50 years; and to support the Society's role as source of knowledge and expertise for a worldwide community of researchers.

250 participants came from more than a dozen countries, and several different generations spanning the last 50 years. Jill Jameson's wise and well-judged introduction led to SRHE Fellow Simon Marginson's (UCL Institute of Education) brilliant keynote address. He argued persuasively that despite its sincere best efforts higher education cannot compensate for society: "there is less room at the top, the middle cannot grow, and there's not much the selection function of higher education can do in the face of class and power". Contemporary reflections on research themes saw Marcia Devlin (Federation University, Australia), Bruce Macfarlane (Southampton), Mary Stuart (Lincoln), Rajani Naidoo (Bath) and Jeroen Huisman (Ghent) overcome the limitations of the brief time allowed to give us thought-provoking overviews of, respectively: learning, teaching and the curriculum; academic practice, identity and careers; the student experience; transnational perspectives on HE and global well-being; and research on higher education policy.



There were three 'Perspectives from the new generation of leading researchers': Paul Ashwin (Lancaster) 'Going global – opportunities and challenges for HE researchers'; Penny Jane Burke (Roehampton/Newcastle, Australia) on access and widening participation; and Kelly Coate (King's College, London) on reflective teaching. The Colloquium then adjourned to a Reception at the nearby House of Lords, hosted by SRHE Vice-President Baroness Sharp of Guildford and SRHE President Professor Sir Robert Burgess.

The Colloquium challenged us to think again about higher education and its benefits. Former SRHE President David Watson would surely have argued that the success of HE has produced large numbers of people who are open-minded, tolerant of diverse perspectives, and who we might therefore expect to be very resistant to the growing inequality which was the focus of Simon Marginson's address. We seem to have a paradox. Mass HE has produced a mass graduate population who are massively compliant with growing massive inequality. Has massification failed? This perhaps is one of the questions SRHE might tackle to respond to Shattock's coded criticism that in 2015 we are not sufficiently 'engaged in wider policy issues'. But note also his observation that we are flourishing in ways the founders of SRHE could only dream of. 'Valuing research into higher education', indeed: the Colloquium, adroitly steered by Helen Perkins, Paul Johnson (Institute of Fiscal Studies) and Manja Klemencic (Harvard), succeeded superbly. The Council, Director and staff must be congratulated on conceiving and staging an event worthy of the SRHE's distinguished history.

SRHE NETWORK EVENTS 2015

Below is brief summary of the SRHE Network events which took place in 2015 as an overview of the activity of our Networks. Further details are available from www.srhe.ac.uk/networks

| SRHE Network | Event Title | Date |
|---|---|------------|
| Access & Widening Participation | Researching and Evaluating Widening Participation – Schooling, attainment and admission to higher education | 22/01/2015 |
| Student Experience | Students and Politics | 23/01/2015 |
| Access & Widening Participation | Researching and Evaluating Widening Participation – University outreach activities and progression to higher education | 09/02/2015 |
| Access & Widening Participation | From Freshers' week to Finals: using LGBT student perspectives of higher education to inform research and practice | 11/02/2015 |
| Joint Network Event | East Asian Research Collaborations Network: new forms of internationalisation | 18/03/2015 |
| Student Experience | Black & Minority Ethnic Student Experience and Attainment Seminar | 20/03/2015 |
| Access & Widening Participation | Researching and Evaluating Widening Participation – Learning, teaching and curriculum in higher education | 23/03/2015 |
| Access & Widening Participation | Researching and Evaluating Widening Participation – Mature and part-time students: Accessing and succeeding in HE | 13/04/2015 |
| Digital University | Methodology and Ethics for Researching the Digital University | 17/04/2015 |
| Postgraduate Issues | Funding Postgraduate Study in the UK: issues of widening participation and sustainability | 24/04/2015 |
| International Research & Researchers | Internationalisation in and of higher education: contexts, concepts and contentious issues | 29/04/2015 |
| Access & Widening Participation | Researching and Evaluating Widening Participation – The culture of higher education and the student experience | 11/05/2015 |
| HE Policy | University Governance and Management: Critical Engagements with Theory, Policy and Practice | 13/05/2015 |
| Employability, Enterprise and Work-based Learning | Clear Blue Water or Opportunity and Synergy? | 22/05/2015 |
| Access & Widening Participation | Researching and Evaluating Widening Participation – Employability and graduate Destinations | 08/06/2015 |
| Post Compulsory and FE | New thinking about leadership in English Further Education: expansive cultures and spiritual values as a basis for strong and successful leadership | 23/06/2015 |
| Access & Widening Participation | Researching and Evaluating Widening Participation – Next Steps | 06/07/2015 |
| International Research & Researchers | Climbing the greasiest of poles? Women and HE leadership in developing countries | 13/07/2015 |
| Postgraduate issues | Postgraduate Ethics: Issues, Dilemmas, Solutions | 15/07/2015 |
| International Research & Researchers | Boundary crossing in international doctoral supervision: contexts, cultures and confluences | 16/09/2015 |
| Digital University | Academic identity in the digital university: current trends and future challenges | 25/09/2015 |
| South West Regional | Higher Education, Global Wellbeing and the Refugee Crisis | 30/09/2015 |
| Postgraduate issues | Transferable Skills: Realising potential through translation to other contexts | 23/10/2015 |
| Employability, Enterprise and Work-based Learning | Developing the most employable global citizens: How can we encourage and celebrate outward mobility and working abroad? | 13/11/2015 |
| Digital University | The digital university and its contributions to a sustainable future (Nottingham Trent University) | 19/11/2015 |
| Student Experience | International Students: Transition, Belonging & Support | 20/11/2015 |

Over 600 delegates attended the above events, with 50% being SRHE members, 50% non-members.

PROFESSIONAL DEVELOPMENT WORKSHOPS 2015

17

The Society continues to offer a series of professional development workshops to support student and postgraduate researchers, to help build capacity in higher education. Below is a list of workshops offered during 2015, which were attended by a total of approximately 300 delegates, with an average of 25 delegates per workshop.

Details of the 2016 programme of these workshops are available from www.srhe.ac.uk

| Event Title | Date | Delivered/Facilitated by |
|---|------------|---|
| Preparing Research Proposals | 28/01/2015 | Carol Spencely, Pam Denicolo |
| Research Approaches and Methods | 18/02/2015 | Dawn Duke, Pam Denicolo |
| Academic Writing Skills | 19/02/2015 | Rowena Murray |
| One-day Writing Retreat | 20/02/2015 | Rowena Murray |
| Demystifying and Preparing for the Doctoral Viva | 04/03/2015 | Pam Denicolo, Dawn Duke |
| Peer Review: a workshop for newer researchers | 27/03/2015 | Rosemary Deem |
| Phenomenography: an approach to analysing interview data in higher education. | 14/05/2015 | Paul Ashwin |
| An Introduction to Constructivist Techniques: Theory and Practice | 29/05/2015 | Pam Denicolo, Trevor Long, Kim Bradley-Cole |
| The basics of mentoring for researchers | 02/06/2015 | Sam Hopkins, Mary Dickinson |
| Where does theory come from in the doctoral project? | 08/06/2015 | Victoria Perselli |
| Doctoral Supervision Dilemmas & Resolutions | 10/06/2015 | Pam Denicolo |
| Challenges of Doctoral Examining | 10/06/2015 | Pam Denicolo, Dawn Duke, Julie Reeves |
| Phenomenography: an approach to analysing interview data in higher education. | 17/09/2015 | Alison Shreeve |



The Society's turnover has grown once again to £804k (against £737k last year). This increase is mainly due to the new contractual arrangements for the Society's publications put in place for 2015-2019. The Studies in Higher Education journal continues to make a significant contribution to the income and reputation of the Society, which accounts for a large proportion of the £455k+ received from periodicals and royalties.

Reserves have reduced slightly (now at £749k compared with £778k last year), £225k of which forms a semi-permanent contingency fund, leaving potentially over £500k as an expendable reserve for special projects over the next few years.

Expenditure is gradually increasing in proportion with this increased income (now at £798k compared with £717k last year), which is in line with the increasing number of events and activities offered, including this year some £50k of expenditure on the Society's 50th Anniversary celebrations by way of a special conference and a reception at the House of Lords. Further cost increases are sustainable given the security of the Society's recently secured publications contract, which will ensure income remains stable for the next 5 years from 2015 to 2019.

A full financial review of all expenditure has been scheduled to be in line with the next rent review on the Society's current premises in August 2016, and before the process for the next re-tendering of the contract for the Society's publications nears in 2017.

In the meantime, the Society remains comfortably placed to deal not only with ever increasing costs, but also has financial capacity for embarking on further planned activities to the extent of up to say £100k per annum over the next few years, this year for instance has seen an increase in the allocation of funds towards the Society's Research & Scoping awards, which now stands at £75k.

The thanks of the Treasurer need, as ever, to be recorded to the SRHE Team and the Director Helen Perkins, for the thoughtful and responsible management of the Society's income and expenditure.

Finally, I am pleased to confirm once again that the SRHE is fully compliant with all requirements stipulated by the Charity Commission, and is thus in possession of a 'clean bill of health' in financial terms for 2014-15.

MR DAVID PALFREYMAN, MA, MBA, LLB, FRSA

STATEMENT OF FINANCIAL ACTIVITIES (SOFA) FOR YEAR ENDING 31 JULY 2015

(Including Income and Expenditure Account) for the year ended 31 July 2015

19

| | | Unrestricted Funds 2015 £ | Restricted Funds 2015 £ | Total Funds 2015 £ | Total Funds 2014 £ |
|---|-----|------------------------------------|----------------------------------|-----------------------------|-----------------------------|
| Incoming Resources | | | | | |
| <i>Incoming resources from generated funds:</i> | | | | | |
| Voluntary income | | | | | |
| Donations and grants | 2. | 7,500 | – | 7,500 | 7,500 |
| Activities for generating funds | | | | | |
| Investment income | 3. | 16,350 | 221 | 16,571 | 14,292 |
| Incoming resources from charitable activities: | | | | | |
| Subscriptions | 4. | 110,076 | – | 110,076 | 160,300 |
| Miscellaneous income | | 3,096 | – | 3,096 | 35,726 |
| Conference revenue | | 211,488 | – | 211,488 | 215,746 |
| Publication sales | | 141 | – | 141 | 362 |
| Periodicals and royalties | | 454,898 | – | 454,898 | 303,370 |
| Total Incoming Resources | | 803,549 | 221 | 803,770 | 737,296 |
| Resources Expended | | | | | |
| Cost of generating funds | | | | | |
| Costs of generating voluntary income | 5. | 3,019 | – | 3,019 | 2,713 |
| Charitable activities | 5. | 789,612 | – | 789,612 | 710,195 |
| Governance costs | 5. | 5,645 | – | 5,645 | 5,575 |
| Total Resources Expended | | 798,276 | – | 798,276 | 718,483 |
| Net outgoing resources | | | | | |
| Unrealised gain on revaluation of investments | 11. | 5,273 | 221 | 5,494 | 18,813 |
| | | 22,816 | – | 22,816 | 19,674 |
| Net outgoing resources and net movement in funds | 6. | 28,089 | 221 | 28,310 | (38,487) |
| Reconciliation of funds | | | | | |
| Total funds brought forward | | 721,152 | 56,471 | 777,623 | 739,136 |
| Total funds carried forward | | 749,241 | 56,692 | 805,933 | 777,623 |

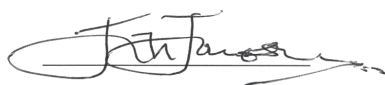
The Statement of Financial Activities includes all gains and losses in the year.
All incoming resources and resources expended derive from continuing activities.

BALANCE SHEET AT 31 JULY 2015

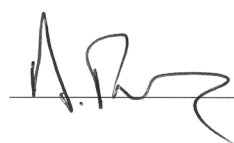
| | Note | 2015 | | 2014 | |
|-------------------------------------|------|----------------|----------------|----------------|----------------|
| | | £ | £ | £ | £ |
| Fixed Assets | | | | | |
| Tangible assets | 10. | | 13,188 | | 19,554 |
| Investments | 11. | | 383,584 | | 347,877 |
| | | | <u>396,773</u> | | <u>367,431</u> |
| Current Assets | | | | | |
| Debtors | 12. | 61,307 | | 36,593 | |
| Cash at bank and in hand | | 643,683 | | 596,520 | |
| | | <u>704,990</u> | | <u>633,113</u> | |
| Creditors | | | | | |
| Amounts falling due within one year | 13. | (295,830) | | (222,921) | |
| Net Current Assets | | | <u>409,160</u> | | <u>410,192</u> |
| Net Assets | 15. | | <u>805,933</u> | | <u>777,623</u> |
| Unrestricted Funds | | | | | |
| General Fund | 14. | | 749,241 | | 721,152 |
| Designated Funds | 14. | | — | | — |
| Restricted Funds | 14. | | <u>56,692</u> | | <u>56,471</u> |
| Total Funds | | | <u>805,933</u> | | <u>777,623</u> |

The financial statements have been prepared in accordance with the provisions applicable to companies subject to the small companies regime under the Companies Act 2006 and the Financial Reporting Standard for Smaller Entities (effective April 2008).

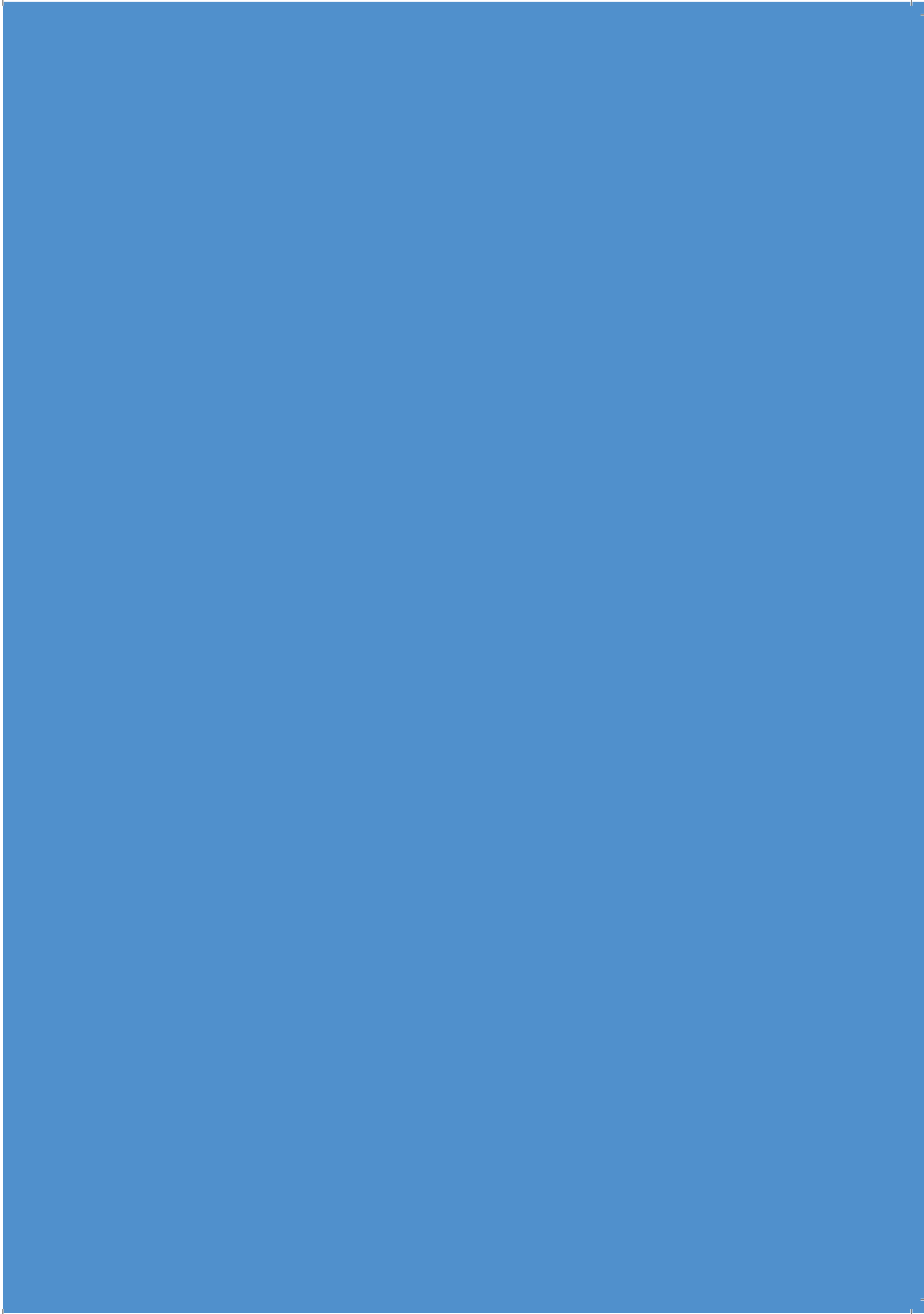
Approved and authorised for issue by the Governing Council on 22nd October 2015 and signed on its behalf by:



J JAMESON



D PALFREYMAN



The Society for Research into Higher Education (SRHE) is an independent and financially self-supporting international learned Society.

It is concerned to advance understanding of higher education, especially through the insights, perspectives and knowledge offered by systematic research and scholarship.

The Society's primary role is to improve the quality of higher education through facilitating knowledge exchange, discourse and publication of research. SRHE members are worldwide and the Society is an NGO in operational relations with UNESCO.

The Society has a wide set of aims and objectives. Amongst its many activities the Society:

- is a specialist publisher of higher education research, journals and books, amongst them *Studies in Higher Education*, *Higher Education Quarterly*, *Research into Higher Education Abstracts* and a long running book series.
- operates a regular programme of network events/seminars and professional development workshops throughout the year for researchers and practitioners working in higher education from every discipline.
- runs the largest annual UK- based higher education research conference and parallel conference for postgraduate and newer

researchers. This is attended by researchers from over 35 countries and showcases current research across every aspect of higher education.

- Funds a series of dedicated research awards to members, non-members, and newer researchers, in order to encourage and support new research into higher education.

SRHE membership benefits include:

- Free attendance at SRHE network and professional development events
- Reduced rate journal subscriptions and books from a range of publisher catalogues
- Discounted rates for the SRHE conference
- Free subscription to *Research into HE Abstracts* & *SRHE News*
- The opportunity to apply for member research awards
- On-line access to the latest issues of a suite of higher education journals

To find out more visit www.srhe.ac.uk and click on 'Join us'

SRHE

Society for Research into Higher Education
Advancing knowledge Informing policy Enhancing practice

73 Collier Street
London N1 9BE
United Kingdom

T +44 (0)20 7427 2350
F +44 (0)20 7278 1135
E srheoffice@srhe.ac.uk

www.srhe.ac.uk

Director: Helen Perkins
Registered Charity No. 313850
Company No. 00868820
Limited by Guarantee
Registered office as above