

PROF. LESLEY GOUNLEY

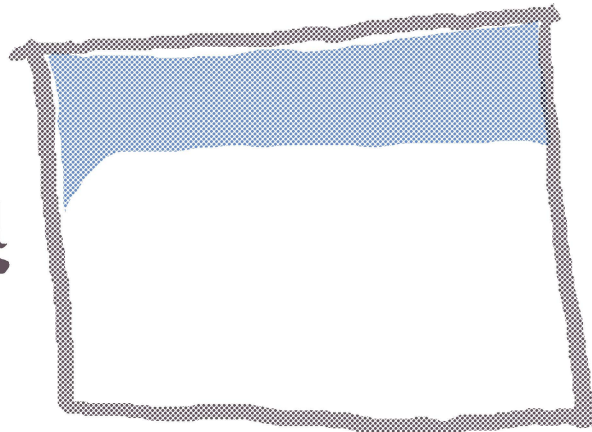
NETWORK
MESHWORK
TWINE

Imaginarities of the digital
and what they do

SAM



COVID opened
our understanding
of learning space
- But we keep
on having the
same conversations!



What
grows
here?

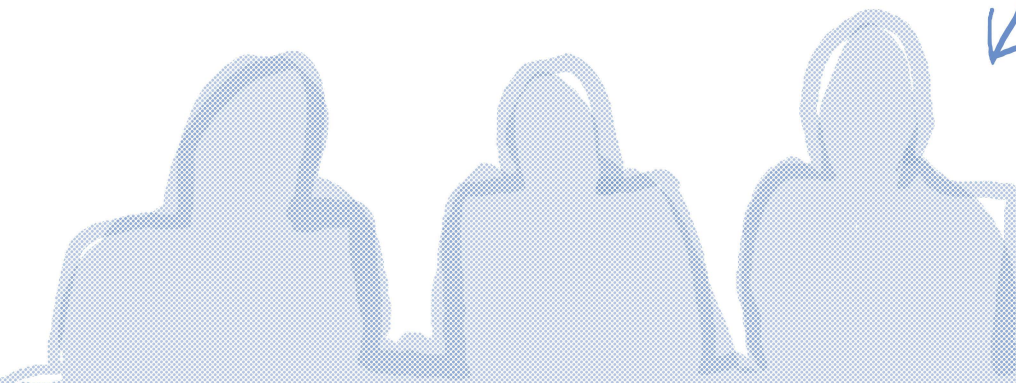


LANDSCAPES
OF LEARNING

OPENING
REMARKS

Hybrid
audience

SINEAD



PROF. LESLEY GOUNLEY

NETWORK MESHWORK TWINE

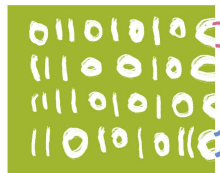
Imaginarities of the digital and what they do



I'm speaking to you from a holiday somewhere warm!
(I will not be taking questions on this)



THE POSTDIGITAL - MERLEAU-PONTY



And the analogue and digital as intertwined

We think of the digital as noticeable by its absence



Etymologically this refers to joining threads, and assumes a uniform blend - as such, does not describe how we mix analogue/digital

EPHEMERALITY EXCLUSION CO-PRESENCE



NETWORKS are made of fixed nodes

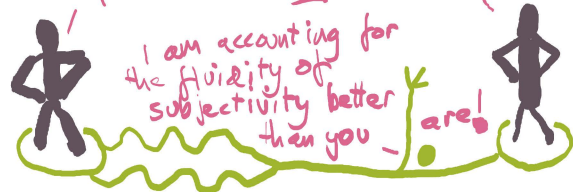
↳ TIM INGOLD
MESHWORKS consist in flexible connections

PELAGOSY AS SURVEILLANCE
LECTURE CAPTURE REF NSS

I AM HERE DOING MY THING

WELL, I AM HERE DOING MY THING

I am accounting for the fluidity of subjectivity better than you are!



But what about the subjectivities that aren't anchored to fixed nodes?

PROF. LESLEY GOUNLEY

NETWORK
MESHWORK
TWINE

Imaginarities of the digital
and what they do



I'm speaking to you
from a holiday somewhere
warm!
(I will not be taking questions
on this)



THE DIGITAL ALWAYS HAS
A MATERIAL SUBSTRATE!

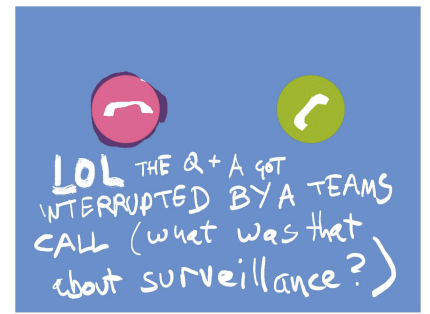
PROF. LESLEY GOUNLEY

NETWORK MESHWORK TWINE

Imaginarities of the digital
and what they do



I'm speaking to you
from a holiday somewhere
warm!
(I will not be taking questions
on this)



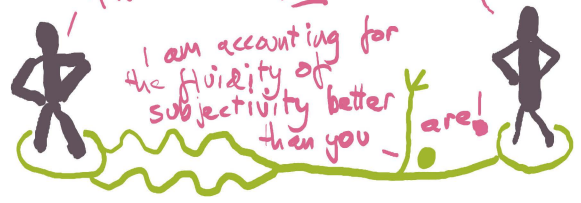
NETWORKS
are made of fixed
nodes

MESHWORKS
Consist in
flexible
connections

I AM HERE
DOING MY
THING

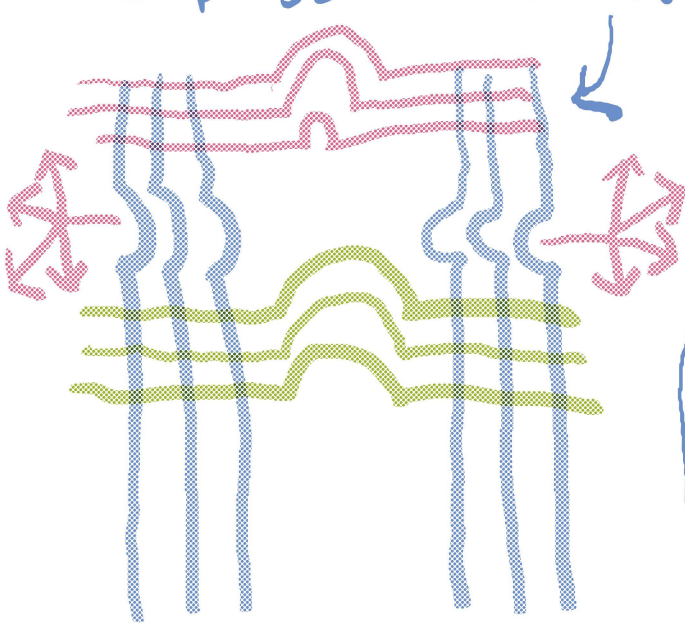
WELL, I
AM HERE DOING
MY THING

I am accounting for
the fluidity of
subjectivity better
than you are!



But what about the
subjectivities that aren't anchored
to fixed nodes?

BOTH concepts
emphasise connectedness over BEING



Here I
am in all
my
embodied,
unfinished
fullness.
GET IN THE
ROOM WITH
ME!



SUE BECKINGHAM

**MATTERING,
MEANING-MAKING,
AND MOTIVATION**

Building **TRUST** and **RESPECT**
through multimodal social
learning communities

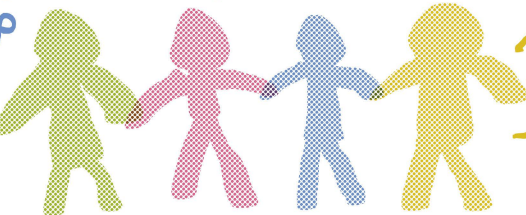
→ Bourdieu



As educators we want to help students build **SOCIAL CAPITAL**

BONDING ← → **BRIDGING**

INTRA-GROUP
SUSTAINING
RELATIONSHIPS



REACHING BEYOND



THAT NETWORK

MATTERING

→ **RELIANCE**



WE HAVE TO MAKE

SURE OUR STUDENTS FEEL THAT THEY **MATTER**

AWARENESS

IMPORTANCE



Dear esteemed professor doctor, please forgive my impertinence in troubling you with this trivial matter

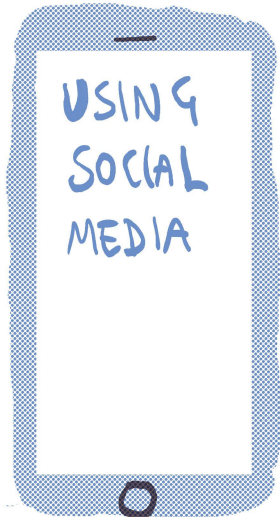
STUDENTS CAN FIND CONTACTING ACADEMICS TERRIFYING!

POLYCONTEXT-UALITY

Students might have -



CARING RESPONSIBILITIES



♥ Can provide a reflective space to evaluate one's own working habits, and understand the habits and preferences of others



A JOB

ANY NUMBER OF EXISTING NETWORKS AND COMMITMENTS

DR. JULIANNE K. VIOLA

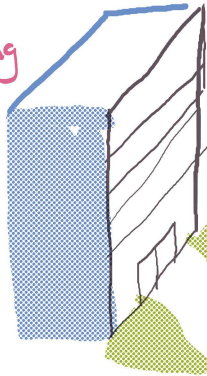
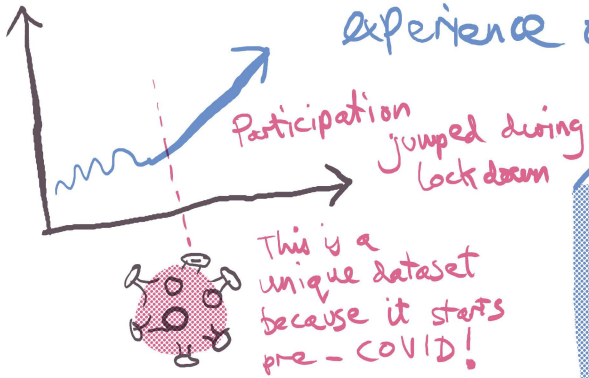
NURTURING MEANINGFUL CONNECTION in a NEW ERA OF LEARNING

How do students experience **BEHONGING** in university spaces?



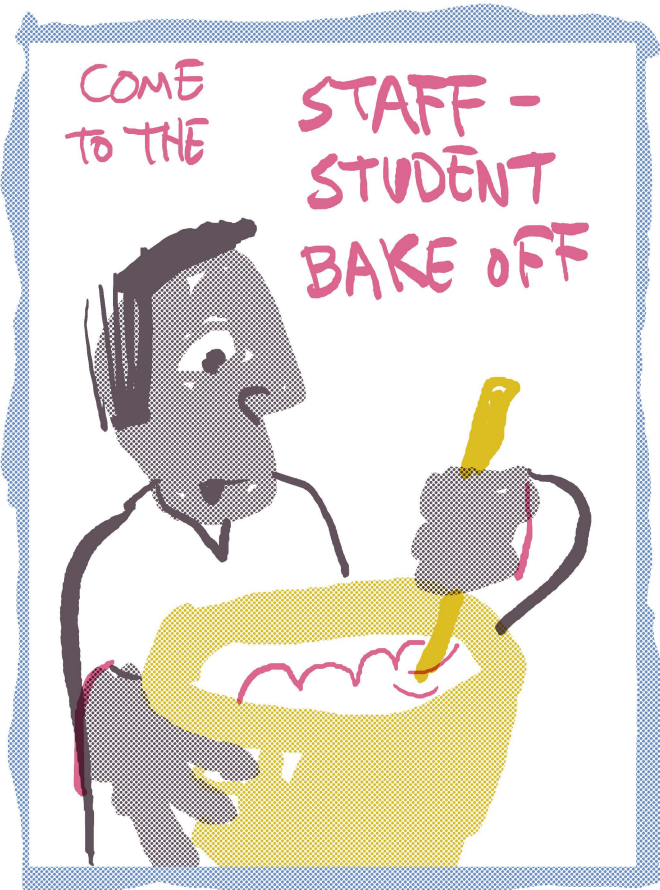
ENGAGEMENT COMMUNITY

→ The BEC study captured the experience of recipients of bursaries



LET ME SHOW YOU AROUND!

Being familiar with a physical campus is important for belonging



It is vital to work and learn together, but informal spaces are also vital!

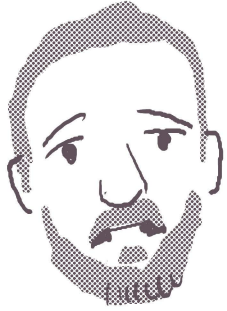
LECTURE HALL



Provide a social space afterwards!

DR. BRETT BUGH

Physical Learning spaces and networked landscapes: Meditations



I don't know if I'll talk much about networks - take it up with my lawyer!

"ALL THAT IS SOLID MELTS INTO AIR"
MARX

LECTURE HALL



Lots of events of classical models of physical learning spaces persist,

but experimentation is happening

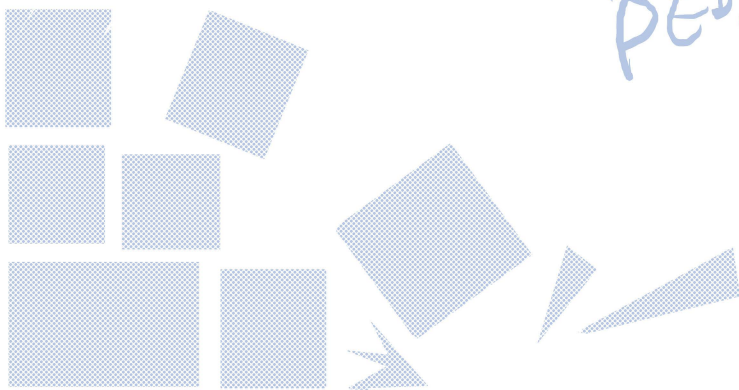
SPATIAL STEREOTYPES

(Not sure that was the exact phrase, sorry)



THE "HARVARD" LECTURE THEATRE

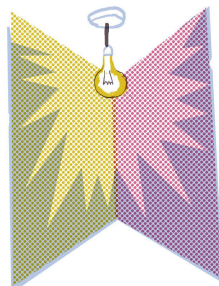
BUILT PEDAGOGY



Innovating requires challenging categories



DOES LEARNING JUST HAPPEN IN, OR ON TOP OF SPACES?



OR are they embedded in each other?

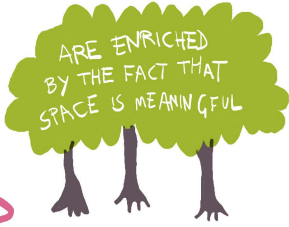
PANEL DISCUSSION

(OR ROUND TABLE)

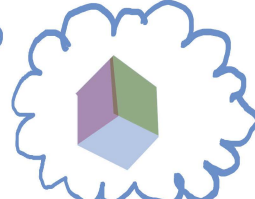
exploring the prospects for space

QUESTIONS!

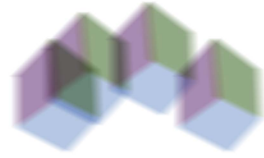
HOW DO WE EVALUATE?



Someone at a university



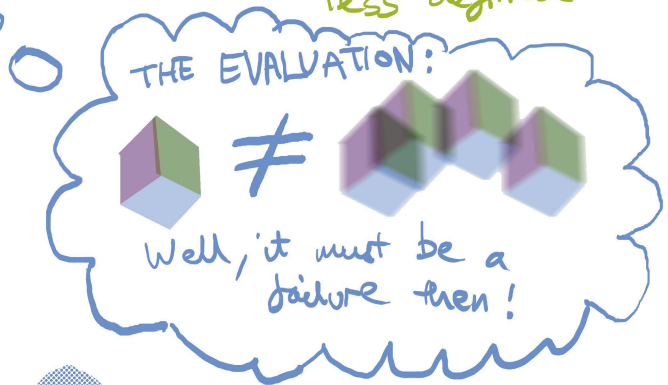
Their idea of how a space should work



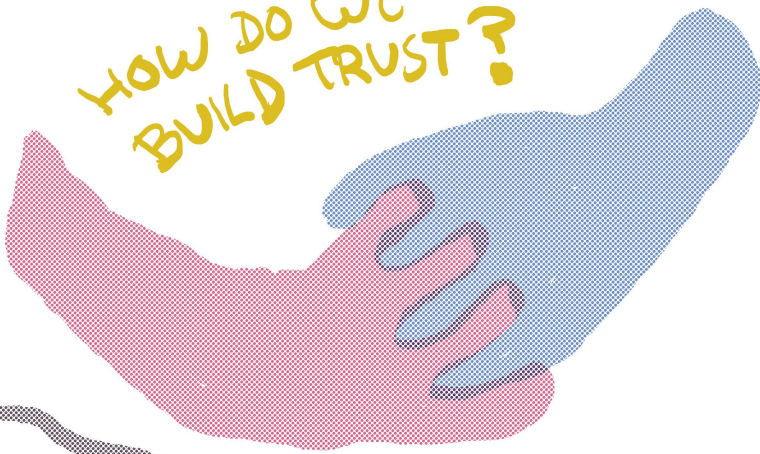
The actual space turns out to be more complex + less defined



A persistent theme has been the idea of a participatory experience of space



HOW DO WE BUILD TRUST?



HOW DO WE CREATE SPACES THAT FIT WHO PEOPLE ARE AND HOW THEY USE IT?



IF YOU BUILD IT, THEY* WILL COME!

*(students, dogs)



Sure, but unlike ghost baseball players, they won't use the space in predictable ways