

Prof. Carol Taylor

POSTHUMAN PEDAGOGIC ASSEMBLAGES

- Reconceptualising how objects, bodies, materialities, affects and spaces come to matter in the landscapes of learning

The promise of **POSTHUMANISM** is that it helps me to push back against some contemporary crises (COVID, climate, AI)



It doesn't mean "after human"



ASSEMBLAGE

A PROCESS,
not a thing



It's about decentering the human - anti-anthropocentric

Prof. Carol Taylor

POSTHUMAN PEDAGOGIC ASSEMBLAGES

- Reconceptualising how objects, bodies, materialities, affects and spaces come to matter in the landscapes of learning

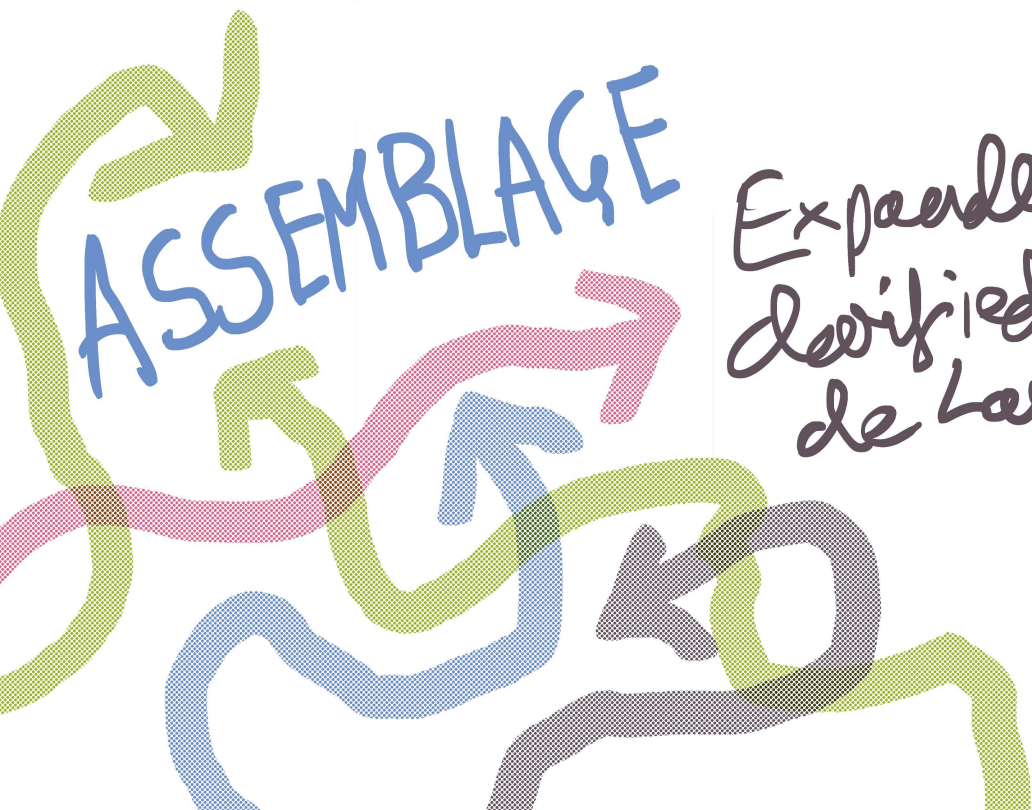
JASJEA PUAUA ALEXANDER WENHEILYE



How can these concepts help navigate markers of identity?

ASSEMBLAGE

Expanded and derived by Manuel de Landa



Prof. Carol Taylor

POSTHUMAN PEDAGOGIC ASSEMBLAGES

Matter in the landscapes of learning

- Reconceptualising how objects, bodies, materialities, affects and spaces come to matter

ASSEMBLAGE and POSTHUMANISM orient us towards

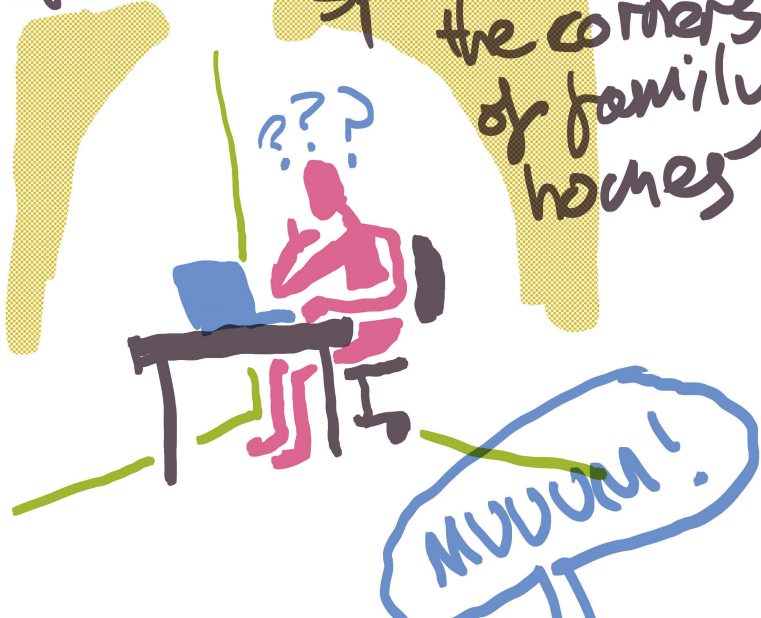


Human/nonhuman entanglements

we are always BECOMING



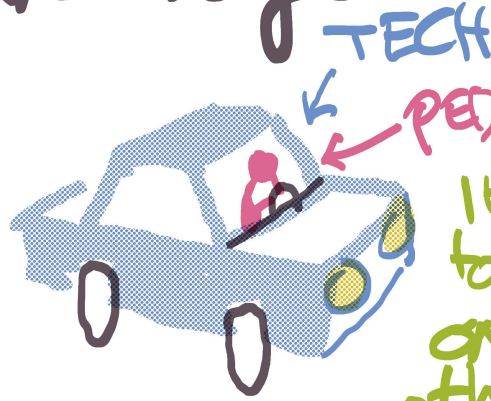
PCR STUDENTS often find working space in the corners of family homes



ACADEMIC LIFE IS EVERYWHERE ALL THE TIME!

Prof. Tim Fawns

Mutually navigating the messy, postdigital spaces of education: entangled design, practice and knowledge



It's an illusion to think that one drives the other
THEY'RE ENTANGLED



DESIGN AS PUNCTUATION

Our pedagogical activities have to fit learners' navigation of learning

Prof. Karen Gravett

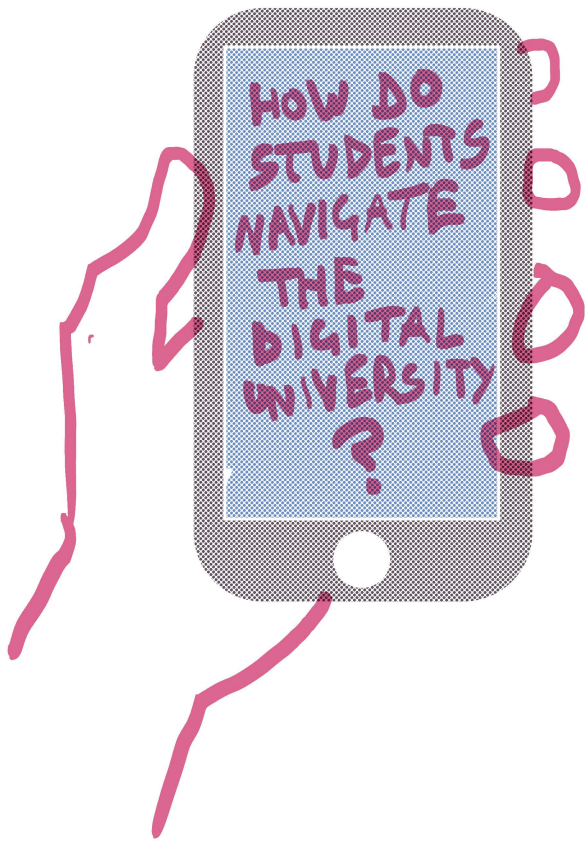
Assemblages of belonging in the digital university



WHAT do students' day to day connections look and feel like?

JANE BENNETT: ASSEMBLAGES are ad-hoc groupings of diverse elements

To create a sense of belonging, space needs to be enacted and curated



Got my scholarship outfit on, and my stash of Tim Tams

THING POWER!

Dr. Harriet Shortt

Picturing places for learning -
How photographs tell stories about
where learning happens

I use visual methods to explore
peoples' experiences of
spaces (not just work places)

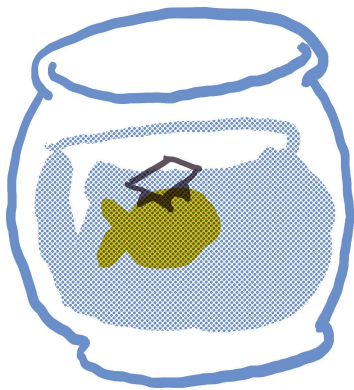
RECENT EXAMPLE: UWE Business school



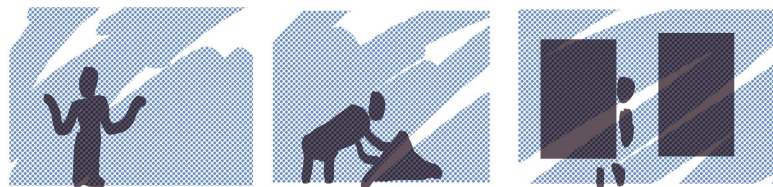
It's all
made of
glass!



PARTICIPANT PHOTOGRAPHY

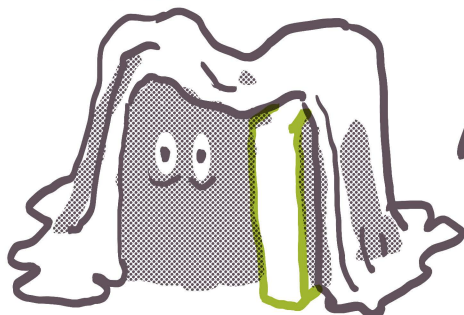


Teaching in
a goldfish
bowl



Window shopping
+ surveillance

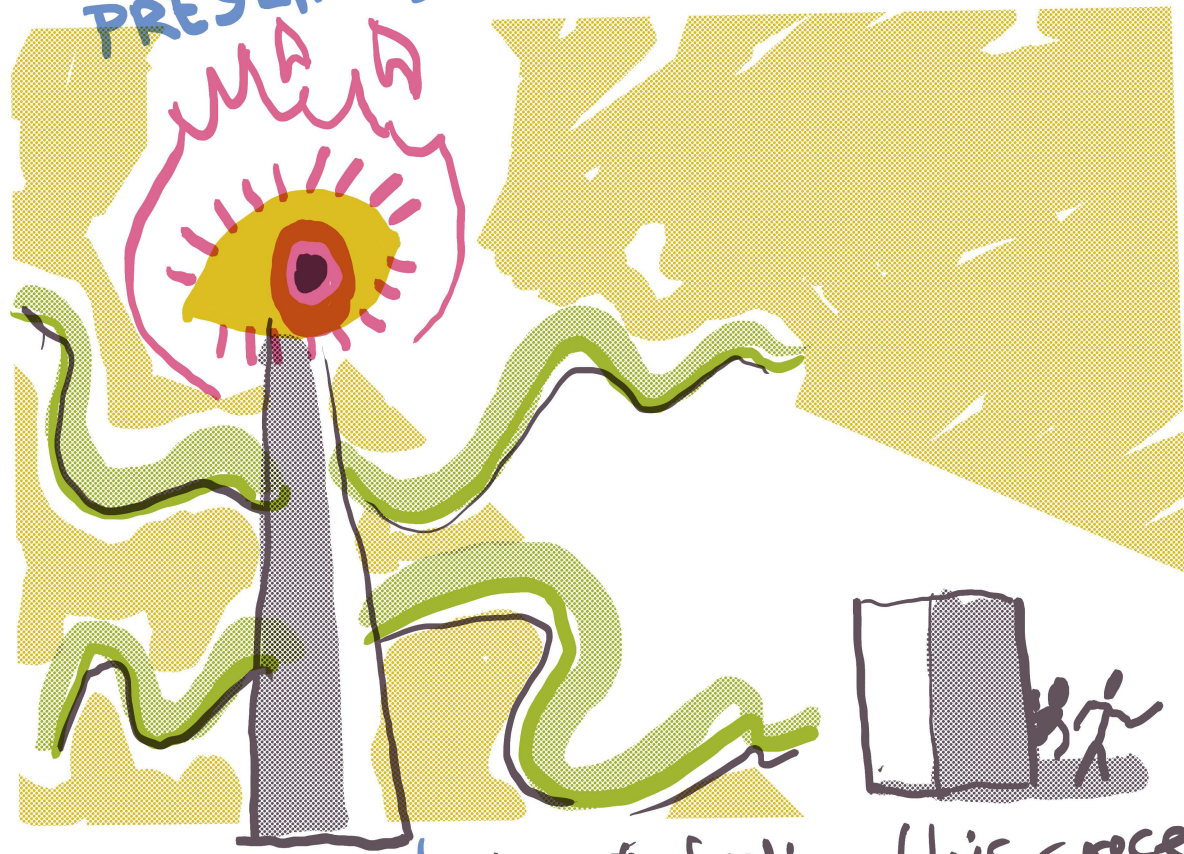
Ad-hoc
privacy
solutions



ADULTS NEED DENS TOO!
curated privacy, but
still close to lecturers

PANEL DISCUSSION

WHERE DO WE GO NOW? WHAT ARE THE PROSPECTS FOR ENACTING THE IDEAS PRESENTED THIS MORNING?



CAROL:
I remain confident in our creative ability to evade the panoptic tentacles of surveillance

I'm not feeling this space, gonna go build my den



... I did want to get in here though



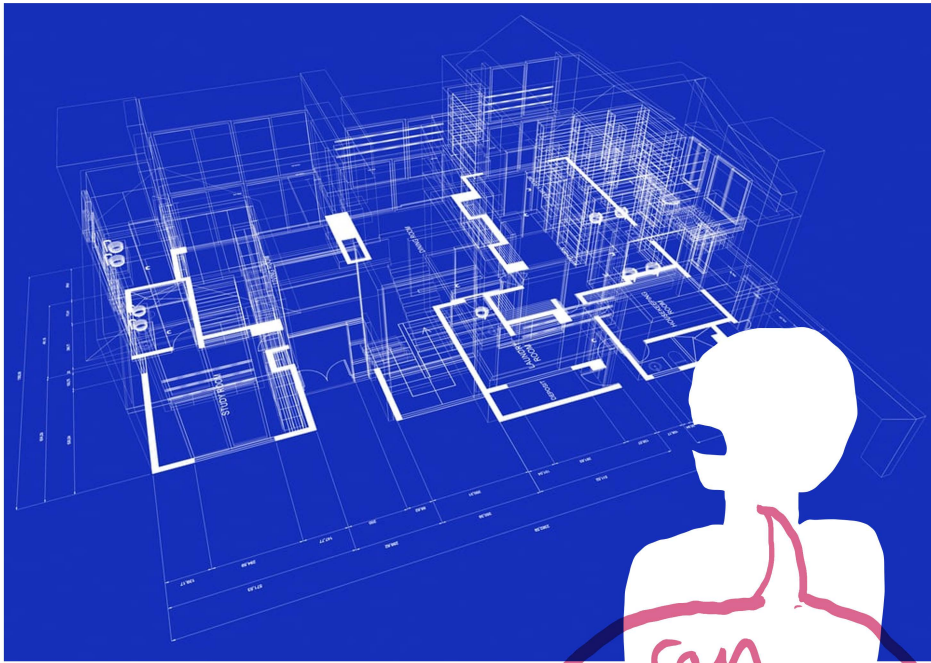
KAREN:

manufactured "belonging"

But should not be excluded!

Learners should not be forced into

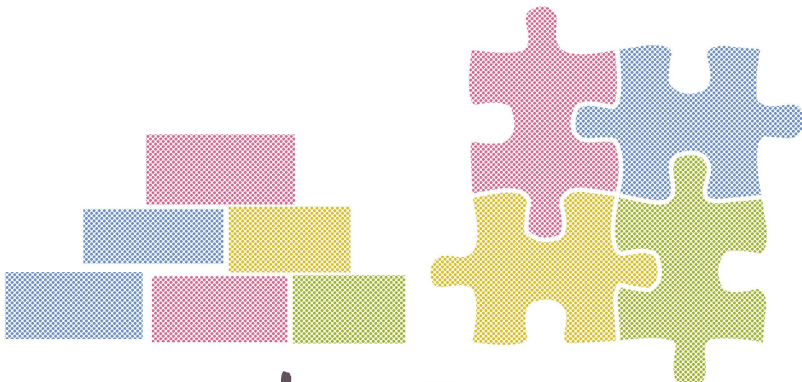
PANEL DISCUSSION



HARRIET:
CODESIGN!
Why are insights
like this only
explored after
spaces are built?

Can you include spaces for people to just quietly do their thing?

BRIAN MASSUMI'S EXCLUDED MIDDLE



WHAT DIFFERENT PROCESSES CONSTITUTE COLLABORATIVE LEARNING?

PANEL DISCUSSION

HEY! TEACHER!

ENCOURAGE YOUR
STUDENTS TO WRITE

ON THE
WALL

(Maybe not your kids, though)